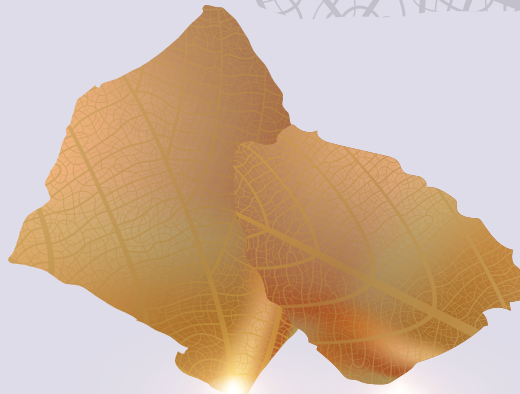




**GOLDEN
ANT**
AWARD WINNING
PROJECTS 2024





**GOLDEN ANT
AWARDS
2024**

ISBN: 978-625-8164-28-2
Certificate No: 15668
Publication No: 172

Project Coordinator

M. Cemil Arslan

Editor

Büşra Yılmaz

Contributors

Ezgi Küçük Çalışkan
Emrehan Furkan Düzgiden
Samet Keskin

Translator

Damla Özden

Design

Studio Pathway

studiopathway.com

Marmara Municipalities Union

Sarıdemir Mh. Ragıp Gümüşpala Cd. No: 10
Eminönü 34134 Fatih-İstanbul/Türkiye
Phone: +90 (212) 402 1900
Fax: +90 (212) 402 1955

marmara.gov.tr
mbbkulturyayinlari.com

altinkarinca.com.tr
altinkarinca@mbb.gov.tr

© All Publications Rights Reserved.

It cannot be reproduced in any way without
the written permission of the publisher,
except for short quotations for promotion
by showing the source.



GOLDEN ANT

AWARD
WINNING
PROJECTS

2024

Contents





Golden Ant

Foreword	4
Golden Ant Awards	6
Jury and Evaluation Criteria	8
Categories	10
Sustainable Development Goals	14
	16

Award Winning Projects

Disaster Management	21
Smart City Applications	29
Climate Change and Environmental Management	41 63
Architecture and Urban Design	81
Arts and Culture	87
Social Services	105
Urban Planning and Infrastructure	115
Transportation and Mobility	119
Local Development	143
Governance and Participation	149



Foreword





Cities not only respond to local needs but also feel the effects of global environmental, social, and economic shifts. Complex challenges such as climate change, migration, social inequalities, and economic fluctuations are pushing cities beyond their traditional role as places of residence—requiring them to become resilient, agile, inclusive, and solution-oriented hubs. At the forefront of this demanding journey are local governments.

Local governments not only provide people- and community-centered services to address current challenges, but also bear the responsibility of creating future-oriented living spaces in harmony with nature. In this context, municipalities that design creative, sustainable, and inspiring projects are not only meeting today's needs but also actively shaping the cities of tomorrow.

The Golden Ant Awards, organized by Marmara Municipalities Union (MMU), is a significant initiative that aims to spotlight such projects and share their success stories to inspire others. Now in its tenth year, the Golden Ant Awards also mark the 50th anniversary of the MMU, highlighting a half-century of cooperation and solidarity. By recognizing good practices, the Awards promote knowledge and experience-sharing between cities and local governments. In doing so, we aim to enhance municipal capacity, foster more resilient cities, and strengthen the culture of mutual learning.

More than just an award, the Golden Ant symbolizes our belief in the transformative power of local governments, in our collective will to succeed, and in a shared dream of a better future. It serves as a platform that supports the dissemination of good practices, underlining the importance and possibility of collaboration, shared learning, co-creation, and ultimately, a more equitable distribution and better life for all.

I hope the inspiring experiences highlighted by the Golden Ant will open new horizons in other cities and contribute to the efforts to build more just, resilient, and livable cities, grounded in shared wisdom, solidarity, and sustainability. Every achievement celebrated here is a meaningful step toward higher quality of life in our cities and communities of tomorrow.

I would like to extend my gratitude to all our municipalities, project teams, and supporters who have contributed to this important journey. May the Golden Ant Awards continue to spark many more inspiring stories in our cities.

Mustafa Bozbey
President of Marmara Municipalities Union

Golden Ant Awards





Golden Ant rewards good practices developed by municipalities in the Marmara Region. The aim is to contribute to sustainable, resilient, and inclusive urbanization practices by recognizing successful municipal projects, thereby enhancing the visibility and dissemination of good practices at the local level. It is not the municipalities themselves but the projects they have implemented that are rewarded by Golden Ant.

The 2024 Golden Ant Awards were presented to project teams on December 12, 2024, following evaluation by the jury. This report includes the distribution of submitted projects by category, their relationship with the Sustainable Development Goals, and summaries of the projects prepared by the respective project teams.

Jury

Asmin Kavas Bilgiç, Assoc. Prof. Department of Political Science and Public Administration, Eskişehir Osmangazi University / **Bahar Aksel**, Asst. Prof., Department of Urban and Regional Planning, Mimar Sinan Fine Arts University / **Bedrettin Kesgin**, Prof., Department of Social Work, Yalova University / **Ece Ceylan Baba**, Prof., Department of Architecture, Yeditepe University / **Ela Babalık**, Prof., Department of City and Regional Planning, METU / **Erbay Arıkboğa**, Prof., Faculty of Political Science, Marmara University / **Ezgi Orhan**, Assoc. Prof., City and Regional Planning, Çankaya University / **Fatih Terzi**, Prof., Urban and Regional Planning, Istanbul Technical University / **Fatma Ünsal**, Prof., Urban Planning, Mimar Sinan Fine Arts University / **H. Kurtuluş Özcan**, Prof., Environmental Engineering, Istanbul University-Cerrahpaşa / **Hatice Gökçe Okandan**, Co-Founder, Culture Unleashed / **Itir Akdoğan**, Research Director, Turkish Economic and Social Studies Foundation (TESEV) / **Koray Velibeyoğlu**, Prof., City and Regional Planning, Izmir Institute of Technology / **M. Cemil Arslan**, Dr., Secretary General, Marmara Municipalities Union / **Mehmet Nazım Özer**, Urban Planning & Urban Design, MeNO Design/ **Mikdat Kadioğlu**, Prof., Director of Disaster Management Institute, Istanbul Technical University / **Musa Eken**, Prof., Political Science and Public Administration, Sakarya University / **Ömer Lütfi Şen**, Prof., Climate and Marine Sciences, Istanbul Technical University / **Özlem Ece**, Director of Cultural Policy Studies, Istanbul Foundation for Culture and Arts (IKSV) / **Tolga İmamoğlu**, Senior Manager, Transport & Road Safety, WRI Türkiye / **Z. Hande Sart**, Assoc. Prof., Guidance and Psychological Counseling, Boğaziçi University



Evaluation Criteria

Contribution to urban life and municipal development

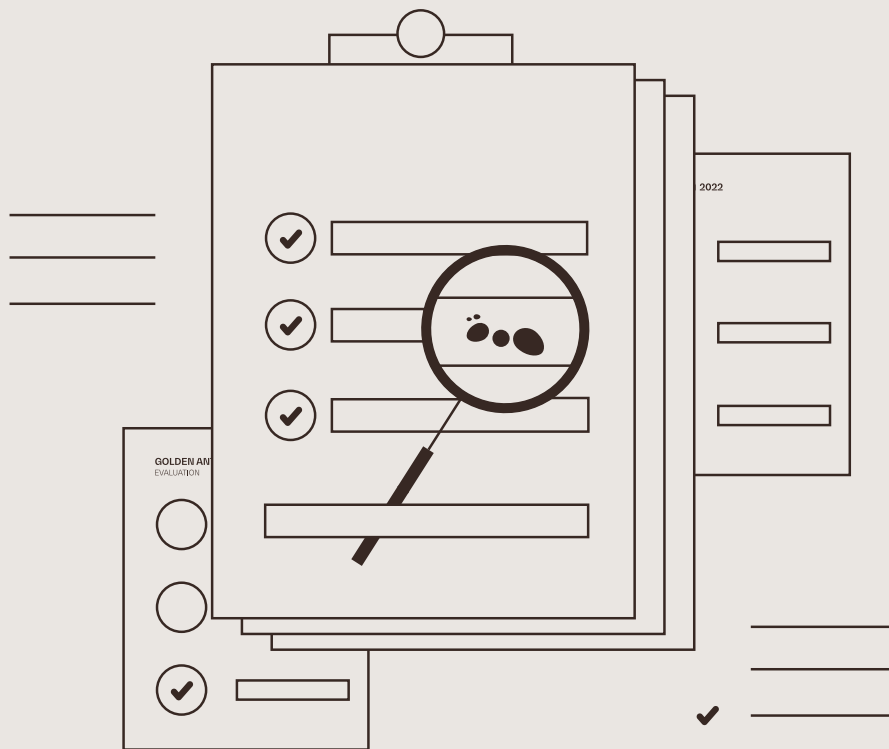
Originality and innovativeness

Applicability in other municipalities/cities

Contributions received from persons and institutions in the preparation, financing and implementation process

Sustainability of the project

Sustainable Development Goals related to the project and their relevance



Categories

Administrative Categories

Category A

District and town municipalities with a population of up to 15,000

Category B

District municipalities with a population of 15,000 – 100,000

Category C

District municipalities with a population of 100,000 and above

Category D

Provincial municipalities

Category E

Metropolitan municipalities

Each project submitted as part of the Golden Ant was classified under two main categories: “Administrative Categories” and “Project Categories.”

A total of 311 applications were received within the scope of 2024 Golden Ant Awards. The categories that received the highest number of applications were Category C for the Administrative Category and Social Services for the Project Category.

Project Categories



Disaster Management



Smart City Applications



Climate Change and Environmental Management



Architecture and Urban Design



Arts and Culture



Social Services



Urban Planning and Infrastructure



Transportation and Mobility



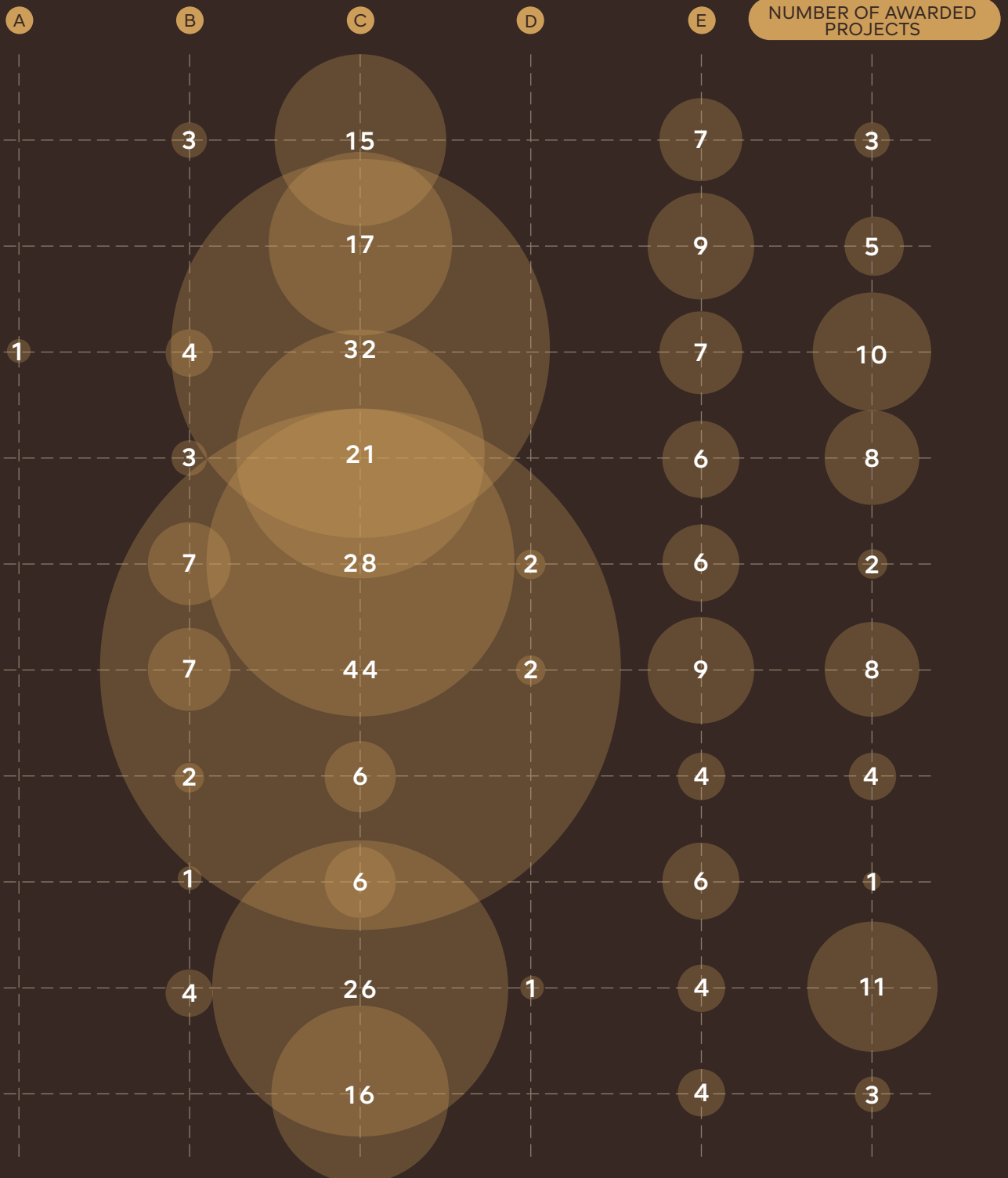
Local Development



Governance and Participation



2024 Golden Ant Awards Categorical Distribution of Submitted Projects



Project Categories and Provinces



Disaster Management



Smart City Applications



Climate Change and Environmental Management



Architecture and Urban Design



Arts and Culture



Social Services



Urban Planning and Infrastructure



Transportation and Mobility



Local Development



Governance and Participation

An analysis of the application data by category across provinces shows that Social Services received the highest number of applications. This indicates that work in this area occupies a significant place within municipal services and that municipalities play an active role in shaping social policy and delivering social services.

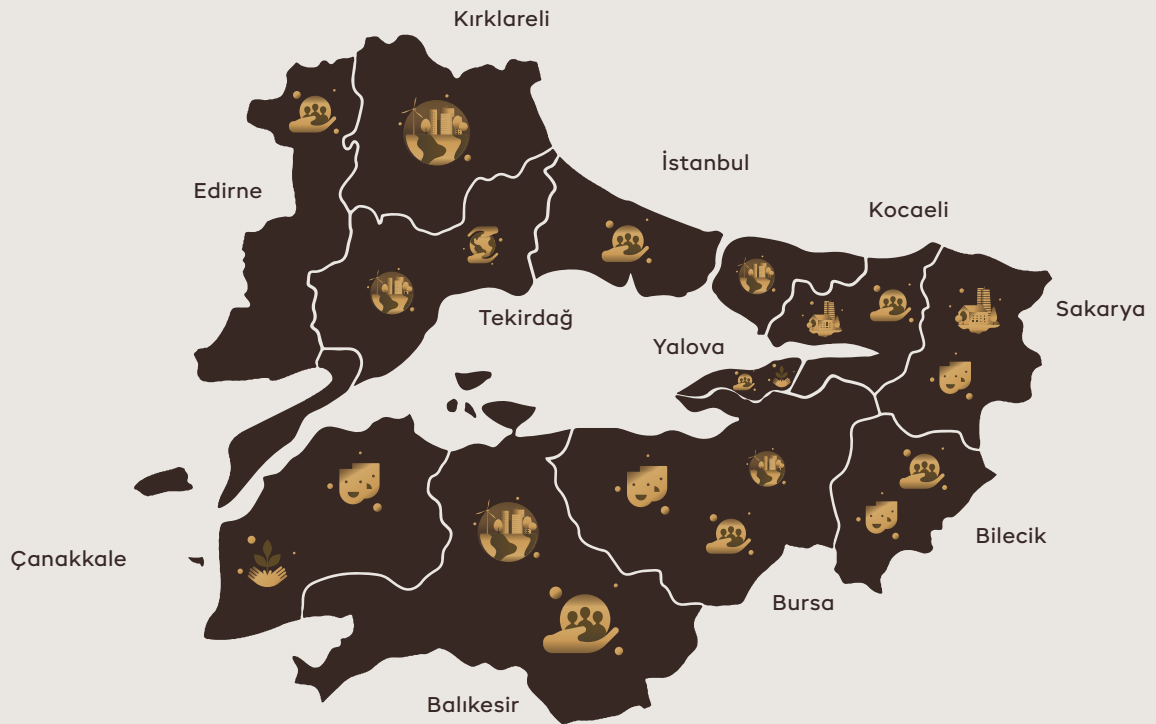
Climate Change and Environmental Management, along with Arts and Culture, are also among the categories with the highest number of applications at the provincial level. This trend highlights the growing importance of environmental sustainability and cultural production in the local governance agenda.

On the other hand, technically oriented categories like Urban Planning and Infrastructure, as well as Transportation and Mobility, received fewer applications. However, despite the lower number of applications, the Urban Planning and Infrastructure category stands out with a high award rate. This suggests that projects in this area distinguish themselves in terms of quality, and that originality and impact-oriented approaches are key criteria in the evaluation process. On the other hand, the Arts and Culture category, despite receiving many applications, has the lowest award rate among all categories.

Overall, the discrepancy between the number of applications and the number of awards given reveals that the evaluation process prioritizes quality. The growing capacity of local governments to develop projects points to an increasing demand for impactful and forward-looking initiatives in key policy areas.



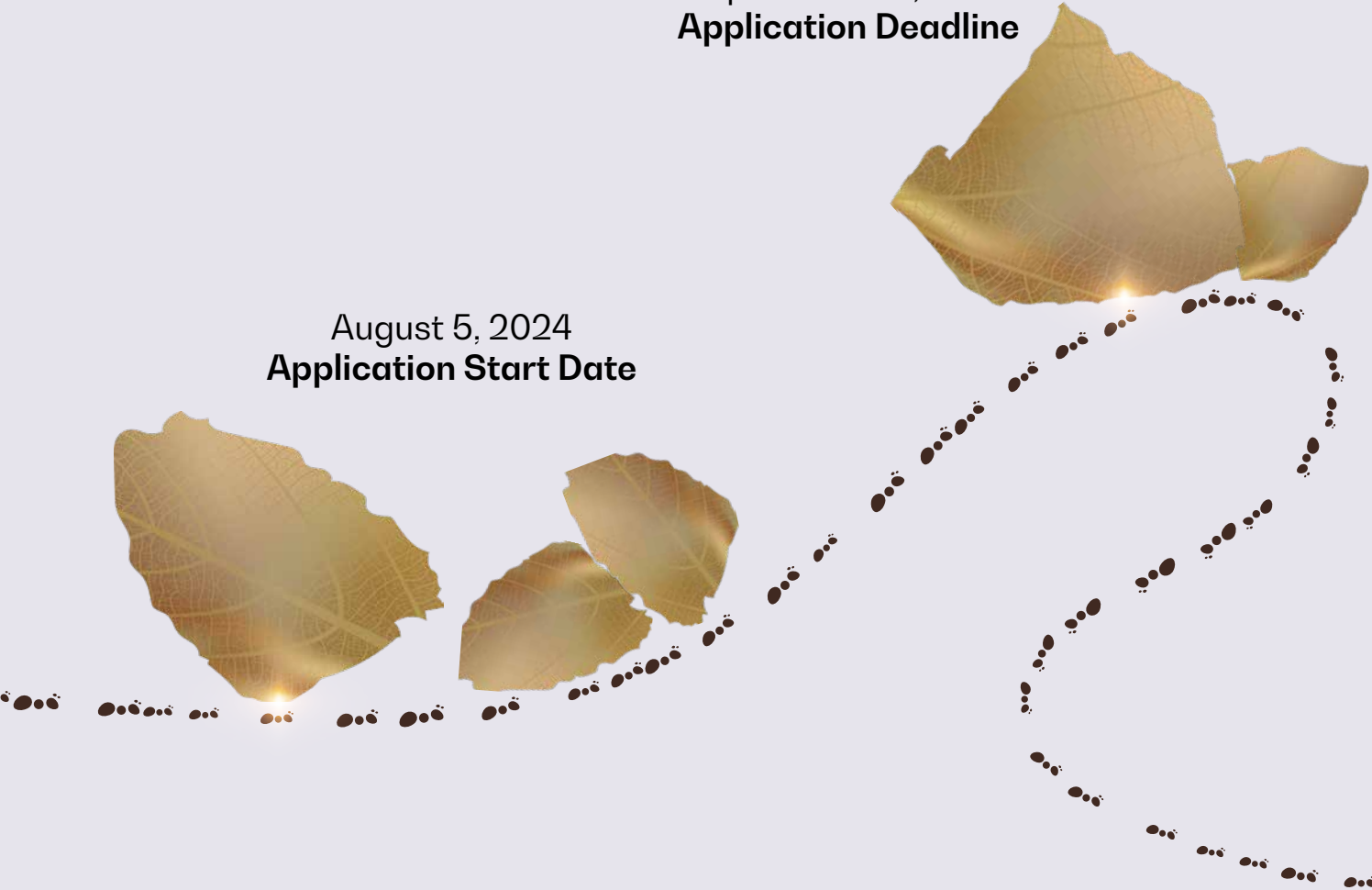
2024 Golden Ant Awards Project Categories with the Highest Application Density by Province



Award Process

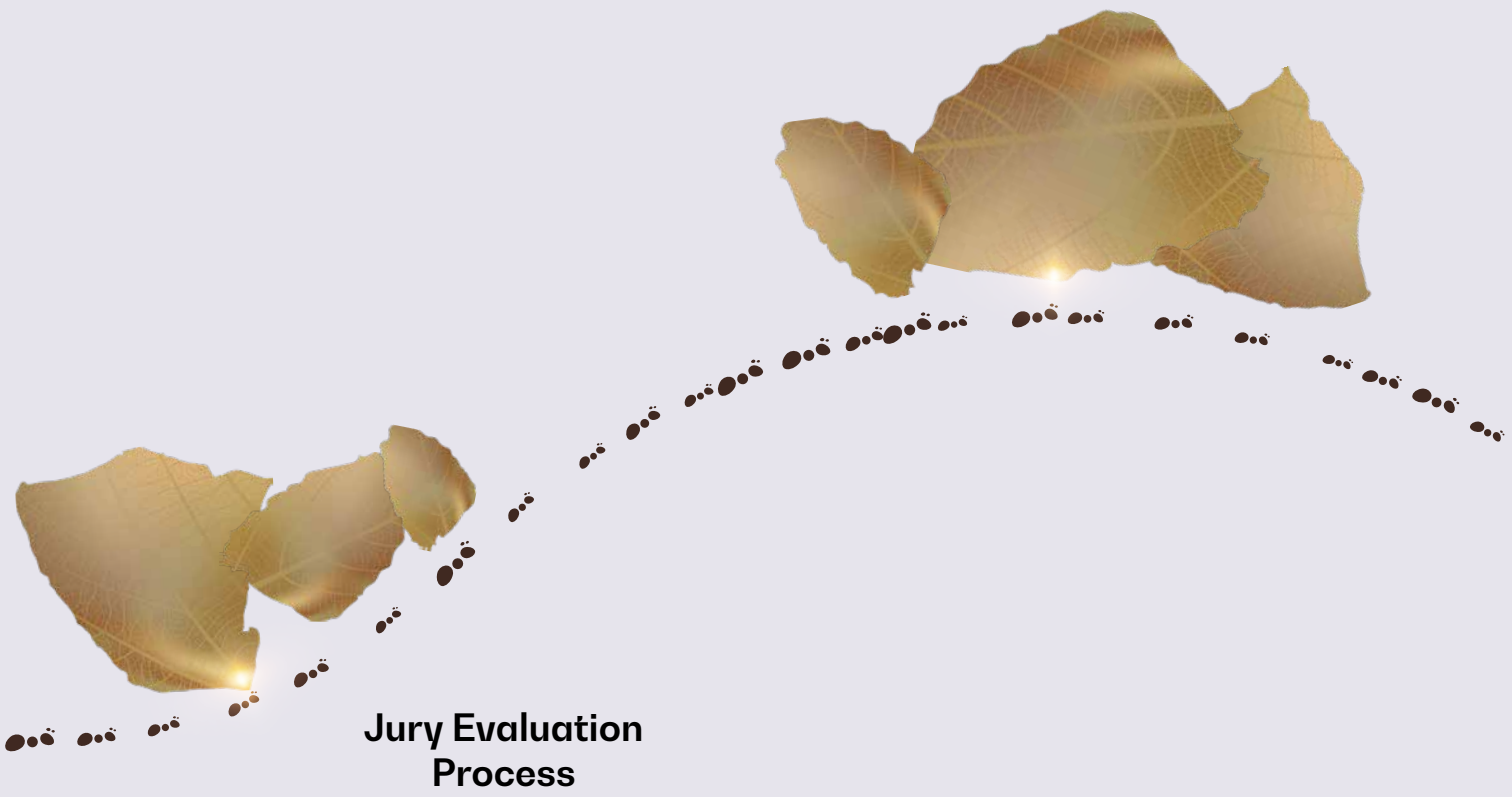
September 20, 2024
Application Deadline

August 5, 2024
Application Start Date





December 12, 2024
Golden Ant Award Ceremony



2024 Golden Ant Projects and Their Association with the SDGs

The analysis of projects submitted for the 2024 Golden Ant Awards shows that the strongest association was established with SDG 11: Sustainable Cities and Communities. As in previous years, this trend remains unchanged, reflecting that the projects implemented by municipalities primarily focus on the sustainability of urban life and recognize communities as an integral part of cities. Accordingly, it is expected that SDG 11 will continue to be the most commonly associated goal in the coming years.

SDG 11 is followed by SDG 4: Quality Education and SDG 10: Reduced Inequalities. While SDG 4 has consistently ranked among the top three in previous years, it is noteworthy that SDG 10 has gained more prominence this year. In past years, health-focused projects had

become more prominent due to the impact of the COVID-19 pandemic, leading to a stronger association with SDG 3: Good Health and Well-being. However, as the effects of the pandemic have diminished, SDG 3 has not ranked among the top three this year, and projects focusing on reducing social inequalities have led to an increase in the association with SDG 10. This shift indicates that municipalities are moving from health-centered projects toward initiatives focused on social inclusion and equity.

While projects associated with SDG 3: Good Health and Well-being have maintained a strong presence, the noticeable increase in the number of projects associated with SDG 13: Climate Action highlights the growing sensitivity of local governments toward

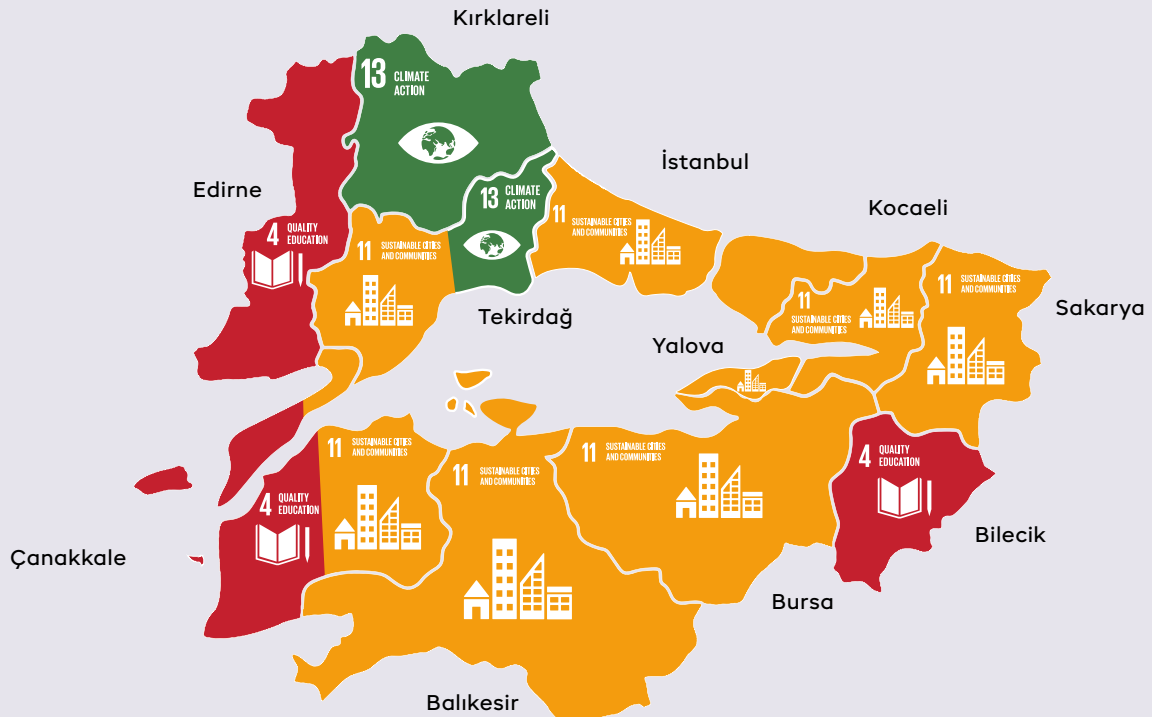




climate change adaptation and mitigation efforts. Among the projects, the least associations were observed with SDG 14: Life Below Water, SDG 2: Zero Hunger, SDG 6: Clean Water and Sanitation, and SDG 15: Life on Land. This can be explained by the limited opportunities for project development in fields such as water ecosystems and terrestrial biodiversity due to the geographical and infrastructural characteristics of municipalities. Particularly, the fact that not all provinces and districts have coastal areas has resulted in a low number of projects associated with SDG 14. Although in previous years the number of projects associated with SDG 7: Affordable and Clean Energy was consistently among the lowest, an increase in initiatives in this area has been observed during

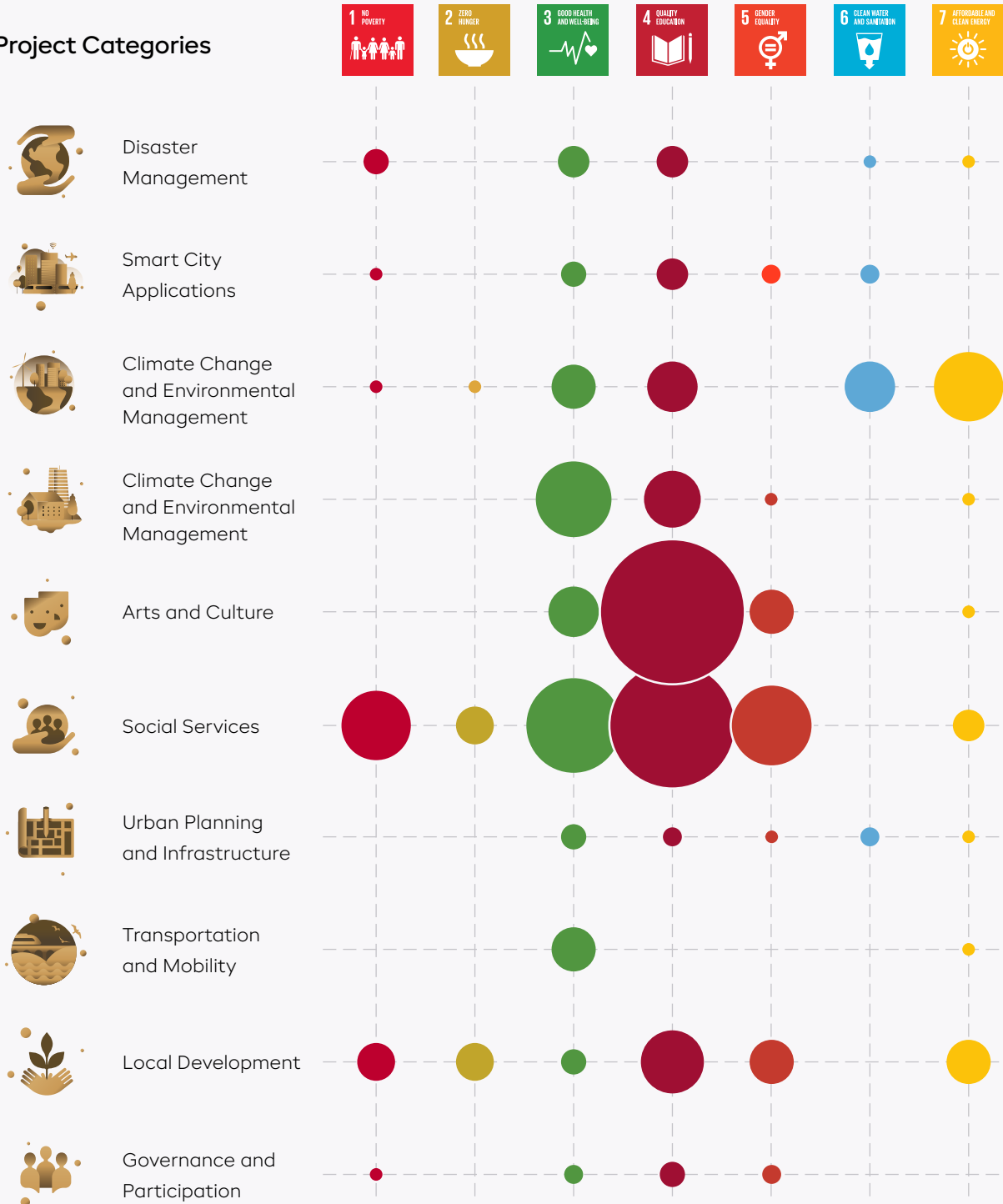
this period. This development indicates that local governments are becoming more aware of energy transition and clean energy usage.

Overall, it is evident that the projects submitted for the Golden Ant Awards are largely focused on themes such as sustainable urbanization, improving the quality of education, and reducing social inequalities, while natural resource management and ecosystem protection are relatively less represented. This overview shows that local governments demonstrate strong performance in the fields of social development and urbanization, but that increasing project development capacity in the area of environmental sustainability remains an important area for improvement.



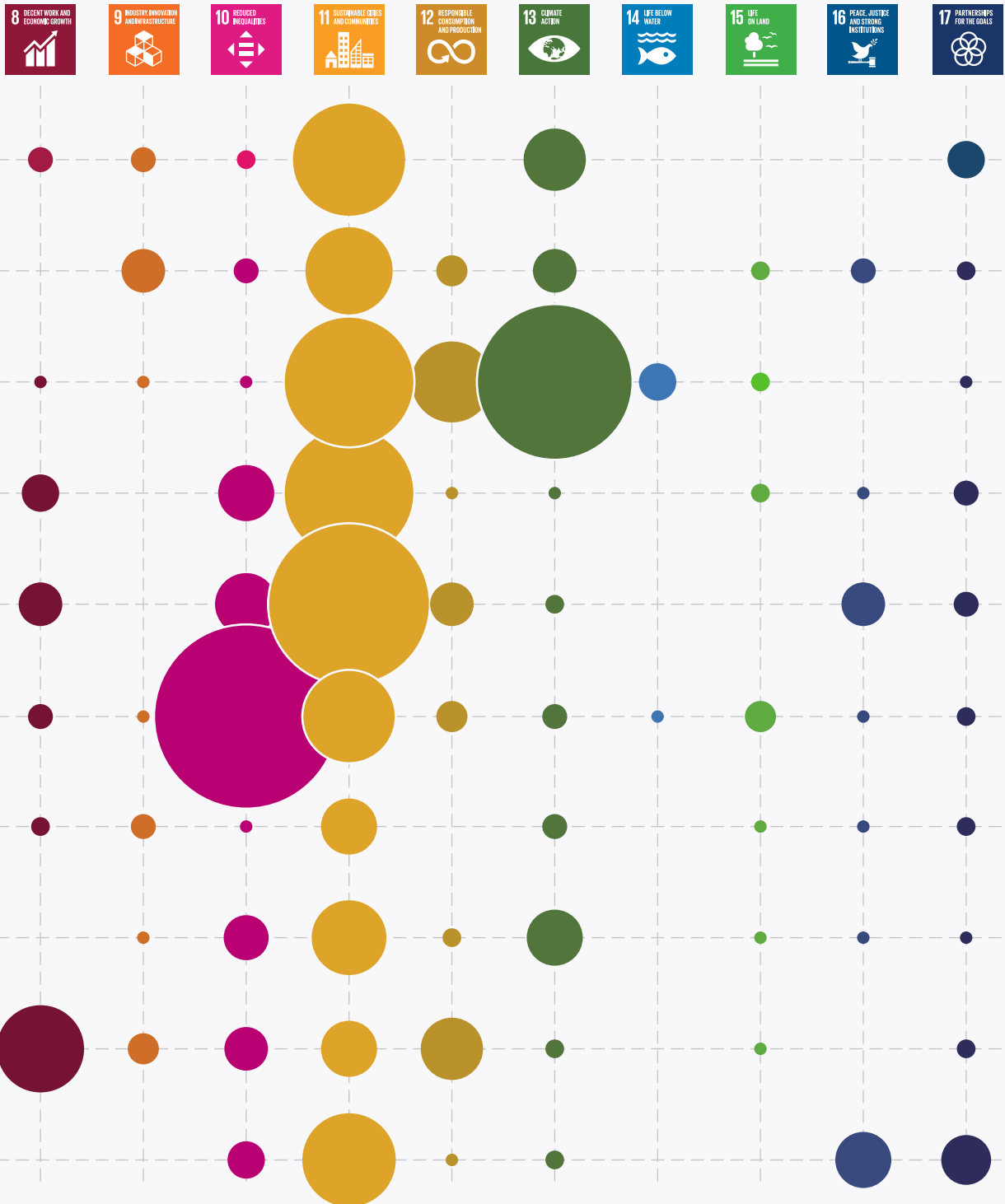
Submitted Projects and Associated SDGs

Project Categories





The circles are proportionally sized to represent the number of project associations.





Disaster Management

Cities face both sudden-onset events—such as earthquakes, floods, fires, hailstorms, landslides, avalanches, tsunamis, chemical spills, and traffic accidents—and prolonged crises like climate change, drought, famine, air pollution, and pandemics, all of which cause physical, economic, and social losses and require timely and effective intervention to prevent and reduce their impacts. The actions required for cities to maintain resilience in the face of disasters and risks, and to enhance their capacity to adapt to unforeseen situations, are defined under disaster management.

This category includes projects aimed at identifying and minimizing risks related to both underground and above-ground infrastructure before disasters occur, equipping cities with the necessary tools and facilities, enabling a rapid return to daily life, emergency action plans that provide essential services during disasters, and solutions and methods developed for use in the event of a disaster.



CoastWAVE PROJECT

Project Owner

BÜYÜKÇEKMECE MUNICIPALITY

Project Category

DISASTER MANAGEMENT



Under the coordination of UNESCO and with the support of the European Commission's Directorate-General for European Civil Protection and Humanitarian Aid Operations (EC DG-ECHO), the project titled "Strengthening the Resilience of Coastal Communities in the North East Atlantic, Mediterranean Region to the Impact of Tsunamis and Other Sea Level-Related Coastal Hazards (CoastWAVE)" was launched on September 1, 2021, with the participation of seven countries. In Türkiye the project has been implemented under the leadership of Boğaziçi University Kandilli Observatory and Earthquake Research Institute (BOUN KOERI), which serves as both a Tsunami Service Provider and National Tsunami Warning Center under UNESCO. The project is carried out in collaboration with Middle East Technical University (METU), the Disaster and Emergency Management Presidency (AFAD), Istanbul

Metropolitan Municipality (IMM), and the Municipality of Büyükçekmece.

Comprehensive efforts were undertaken in line with 12 core indicators defined at the international level for tsunami risk reduction. In particular, under the themes of Assessment, Preparedness, and Response, the project aimed to enhance community resilience in Büyükçekmece against tsunamis and other coastal hazards through the participation of various institutions. Within this scope, awareness-raising meetings and seminars were organized for primary and secondary school students in the district. National and international workshops were also held on tsunami risk reduction, early warning systems, and standard operating procedures. Tsunami information boards as well as evacuation and safe zone signage were installed in



the district by IMM. On November 5, 2022, Türkiye's first tsunami evacuation drill was conducted in Büyükçekmece.

As a result of all these efforts, an application was submitted to the UNESCO-IOC, and Büyükçekmece was officially recognized as a "Tsunami Ready Community" under the UNESCO-IOC Tsunami Ready Recognition Programme.

Büyükçekmece is the first district in Türkiye to receive this title and the second in Europe, following Cannes, France. This project presents a model of disaster preparedness shaped by international cooperation and contributes to the strengthening of local government capacities, the enhancement of community awareness, and the expansion of sustainable risk reduction practices.

The project continues to expand with the development of diverse tsunami awareness educational materials, including specially designed resources for individuals who are blind or visually impaired, and efforts to integrate these materials into national educational resources and curricula in collaboration with AFAD.



PENDİK IS AWARE OF DISASTERS AND RISKS

Project Owner
PENDİK MUNICIPALITY

Project Category
DISASTER MANAGEMENT



Pendik is one of the most crowded districts of Istanbul. With its 36 neighborhoods, the district's growing population has led to increased building density and traffic congestion, resulting in higher carbon emissions and accelerating climate change. Consequently, the risk of natural disasters has risen. In such situations, it is especially critical to prioritize the support of vulnerable groups during emergencies.

In response to these challenges, Pendik Municipality established its Search and Rescue Team (PEAK) in 2020, becoming the first municipality to be accredited by AFAD (Disaster and Emergency Management Presidency). Formed with the participation of volunteer

personnel from various municipal departments, the team has played an active role during earthquakes, fires, floods, and other disasters.

The municipality also received grant support by developing a Solidarity Project under the European Solidarity Corps with eight young volunteers interested in working on disaster and climate change issues. The project aimed to raise public awareness on environmental awareness, disaster preparedness and basic first aid.

This initiative focused on highlighting the impact of climate change and environmental issues that contribute

to natural disasters. Its objectives included fostering environmental awareness, teaching proper actions before, during, and after disasters, and spreading knowledge about first aid practices in emergency situations (accidents, injuries, drowning, illnesses, etc.).

The activities were organized under three main themes. Within the scope of **Disaster Awareness Activities**, three events were held under the titles “Commemoration of the Marmara Earthquake,” “Preparedness for Natural Disasters,” and “Hazard and Risk Hunt.” These events aimed to raise disaster awareness among stay-at-home mothers, families bringing their children to special education at the Aydos Rehabilitation Center, and citizens passing through busy spots along Gazi-paşa Street, where information booths were set up. During the Hazard and Risk Hunt activity, home visits were made to families with disadvantaged individuals (such as persons with disabilities or bedridden individuals). Potential hazards were identified, exit points were determined, and items obstructing evacuation routes were pointed out.

As part of the **Green Mobility Activities**, two events were held: Underwater Cleaning Awareness and Exhibition of Items Removed from the Seabed. Divers from the PEAK team carried out underwater cleaning, and the collected items were exhibited. These events aimed to draw attention to climate change and global environmental challenges, encourage participation from local residents and visitors to the district, and raise public awareness.

Within the scope of the **Basic First Aid Activities**, two initiatives were planned: Basic First Aid Training and Simple Fire Response Techniques. In Pendik, one of the districts on Istanbul’s Asian side with the highest number of fire incidents, awareness efforts were carried out regarding fire hazards, preventive measures, and appropriate responses during a fire. In addition, home visits were conducted with new mothers and families with individuals with Down syndrome to provide information on essential first aid practices in emergency situations.



POST-DISASTER SAFE LIVING SPACES

Project Owner
TEKİRDAĞ METROPOLITAN MUNICIPALITY

Project Category
DISASTER MANAGEMENT



Considering the psychological trauma faced by disaster victims who may lose their homes, loved ones, and life as they know it in the aftermath of large-scale disasters, temporary shelter areas have been established. Spread across 567 hectares and 14 designated centers, these areas are planned to provide for the urgent needs of citizens through prefabricated showers, toilets, tent cities, health clinics, places of worship, schools, etc. Prefabricated shower and toilet units have been stored in disassembled form for quick deployment. Infrastructure preparations have been completed across 10 districts, enabling rapid setup of livable areas following a disaster. The project aims

to restore living conditions as swiftly as possible and to help disaster survivors heal both physically and psychologically.

Effective disaster management relies heavily on pre-disaster planning, precautions, and proactive work. The temporary shelter areas established across the province ensure that safe and healthy living environments can be created quickly in the aftermath of a disaster. This enables affected individuals to continue their lives securely, while also allowing for more efficient search and rescue operations and more organized delivery of aid by public institutions.





Public grazing lands previously used for livestock farming have been repurposed as temporary shelter sites, with the plan to return them to agricultural use after permanent housing is completed. This approach brings a sustainable and environmentally conscious dimension to the project. Applicable in other municipalities as well, this model offers a replicable solution that effectively addresses post-disaster shelter and infrastructure needs.

The project was designed and financed by Tekirdağ Metropolitan Municipality, while its implementation was completed by TESKİ (Tekirdağ Water and Sewerage Administration). The designated areas will be maintained regularly to ensure readiness for use, and once permanent housing is in place, the temporary shelter sites will be reverted to grazing lands.





Smart City Applications

Urban administrations are struggling with diversifying and increasing problems, while also aiming to increase the quality of service, social welfare and life satisfaction of city residents. Achieving all these goals is only possible by using limited resources effectively and ensuring operational efficiency. The solutions developed based on information and communication technologies in the implementation and management of urban services are defined as smart city applications.

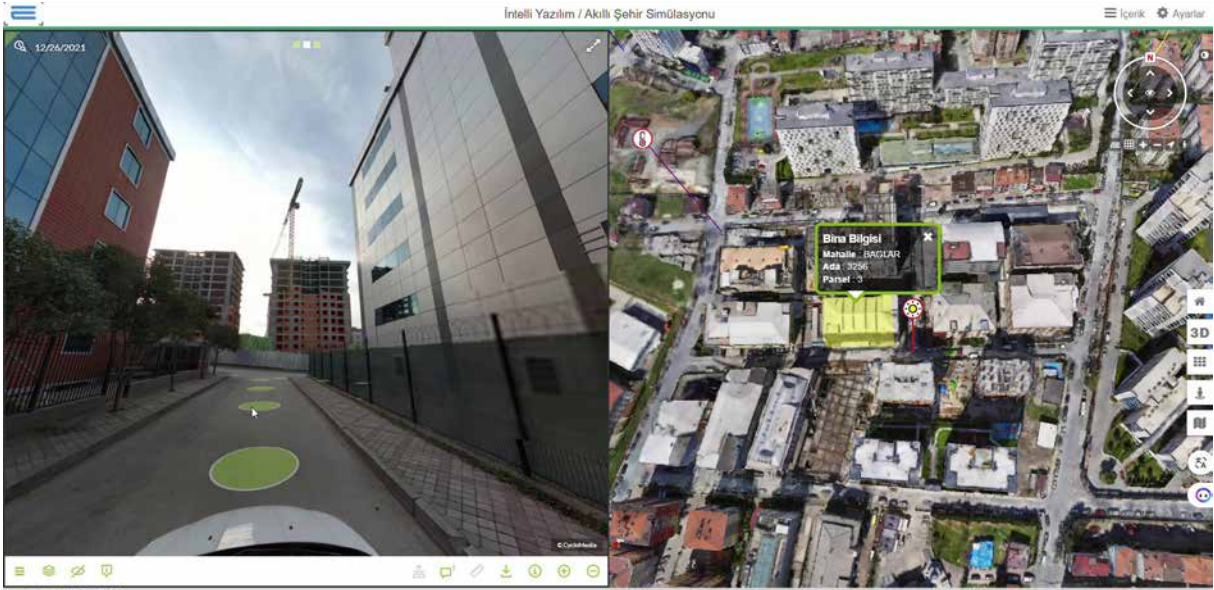
Within this scope, projects that develop systematic and sustainable approaches for more livable cities; use technology and data in an innovative way for interactive and human-centered urban management; address physical, social, and digital planning together; and respond to current or future economic, social, environmental, and cultural needs are considered.



DIGITAL CITY TWIN: SUSTAINABLE CITY MANAGEMENT

Project Owner
BAĞCILAR MUNICIPALITY

Project Category
SMART CITY APPLICATIONS



The Digital City Twin: Sustainable City Management Project is built upon creating and updating a building-stock inventory using a Geographic Information System (GIS) platform. There are approximately 42,000 buildings in the district, yet prior to the project, spatial data existed for less than half of them. Only structures built after 2007 had their information and documentation accessible through MAKS (Spatial Address Registration System).

Through comprehensive fieldwork, all 42,000 buildings were individually assessed and their structural and architectural features, risk status, and other criteria were

recorded to establish their current condition. Covering every neighborhood in the district, data collection also included scanning a total road network of 580 km (streets and avenues).

In the pilot area of Bağlar Neighborhood, 52 sensor stations and cameras—measuring noise, temperature, smoke, wind, light, radiation, etc.—have been installed to gather real-time data, which is continuously monitored via the system. Internet of Things (IoT) technology integrates these sensor feeds into the management information system, enabling AI-driven analysis, early-warning alerts, and emergency alarms. Once rolled

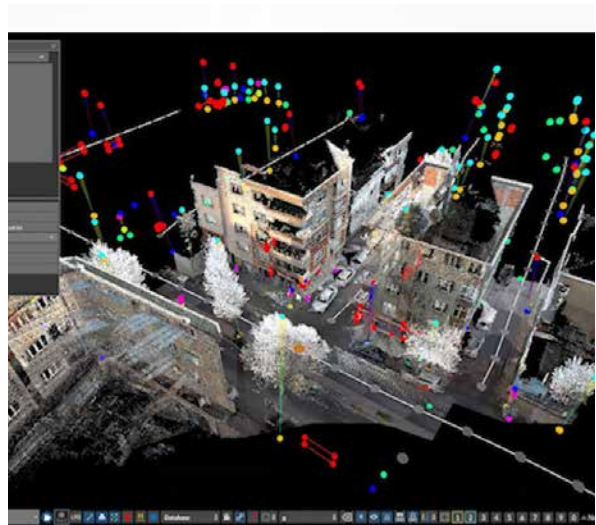
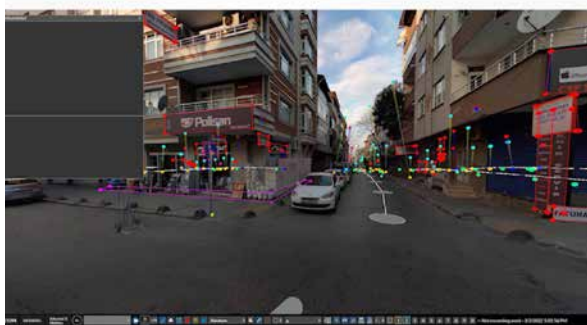
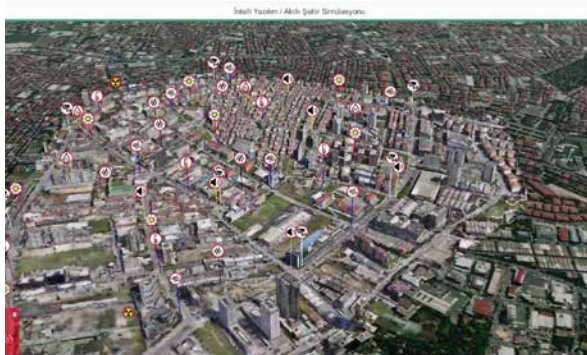
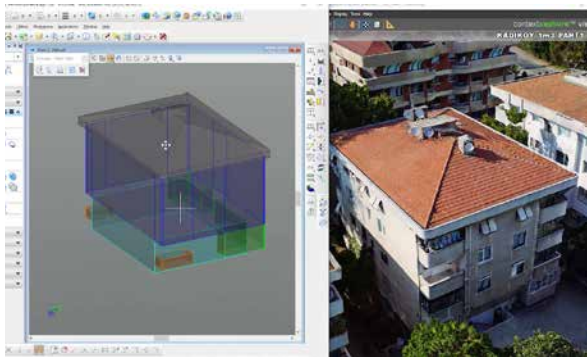


out district-wide, the infrastructure will support over a thousand sensors streaming data continuously.

The project also employs LiDAR (Laser Imaging Detection and Ranging) technology, capturing high-resolution 360° street-level and aerial imagery of every road. These images are digitized and matched within the existing Enterprise Management Platform's software with data from the central MAKS system and the digital archive, thus keeping building records up to date. These studies are repeated at regular intervals to

ensure that the inventory is kept up-to-date.

This dynamic building inventory serves as a living and continuously updated dataset, akin to population statistics. It is especially valuable for rapid decision-making and implementation within Disaster and Emergency Preparedness Plans and their subprojects. Moreover, the Digital City Twin enhances the ability to monitor physical changes over time and to model and manage disaster scenarios more effectively.



“BİZİM ESNAF” MOBILE APP

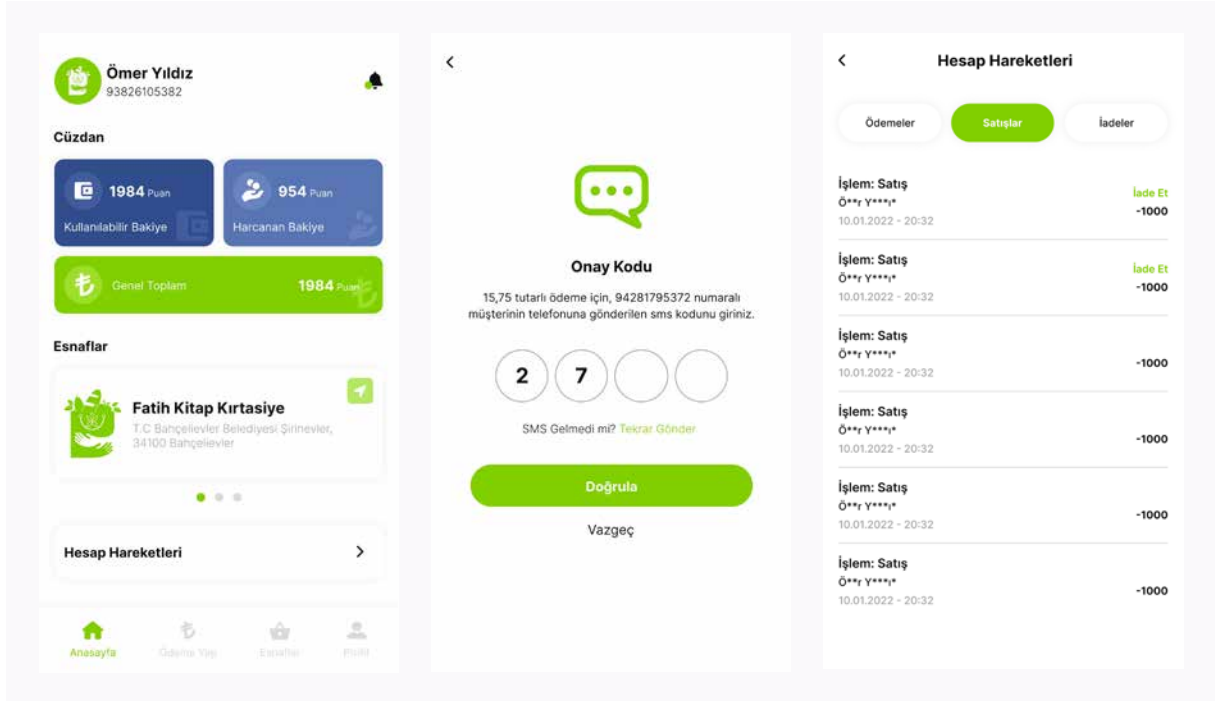
Project Owner
BAHÇELİEVLER MUNICIPALITY

Project Category
SMART CITY APPLICATIONS



The “Bizim Esnaf” (Our Local Merchants) Mobile App introduces an innovative approach to distributing social assistance by combining digital technology with community-focused municipal services. As part of the project, social aid beneficiaries living in Bahçelievler receive virtual credits equivalent to 1 Turkish lira, and these credits can be spent at participating local businesses within the district.

Credits are sent directly to beneficiaries’ mobile phones via SMS or loaded onto their cards. Through the app’s interactive map, users locate partner vendors and complete purchases by scanning a QR code. The target group of the project consists of social aid beneficiaries, local merchants and Bahçelievler Municipality.





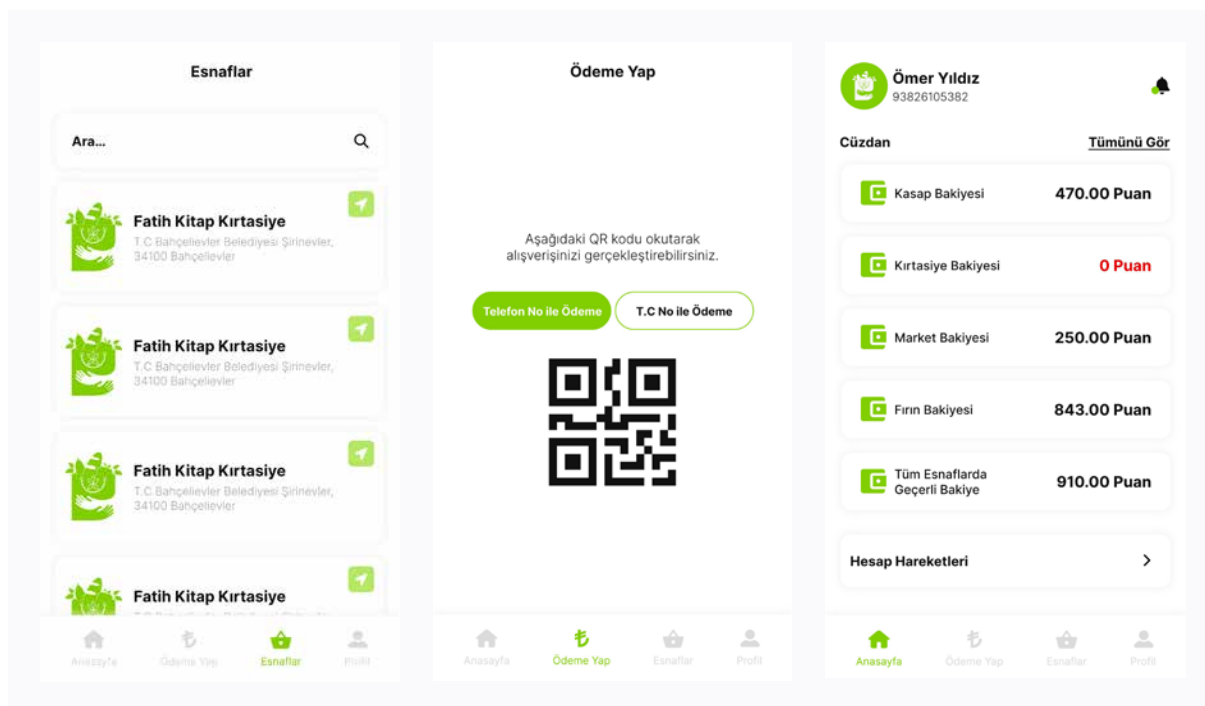
To date, 655 merchants have joined the program and 332,672 transactions have been completed. The network includes shops across various sectors—grocery stores, stationery, pharmacies, housewares, hardware, hair salons, shoe stores, clothing retailers, and bill-payment points. Participating businesses must operate within Bahçelievler’s borders, hold a valid tax registration, and not have a chain-store status.

Thanks to the application, merchants process sales digitally and receive payments regularly from municipal funds. This system ensures secure access to basic necessities for those in need, while simultaneously supporting the local business community and boosting the district’s economy.

Funded entirely by Bahçelievler Municipality’s own resources, the project’s sustainability plan focuses on expanding the variety of participating merchants and integrating new social facilities into the platform. The number of merchants continues to grow, with businesses from an ever-widening range of sectors coming on board.

The app also has a “Zero Waste” feature: residents earn points by recycling, based on the amount of waste they bring to collection centers. These recycling credits can then be used for purchases through the same mobile application.

By leveraging a digital infrastructure to streamline and secure the delivery of social aid, the “Bizim Esnaf” project serves as a model for other municipalities across Türkiye.



WILL YOU BE MY HOME?

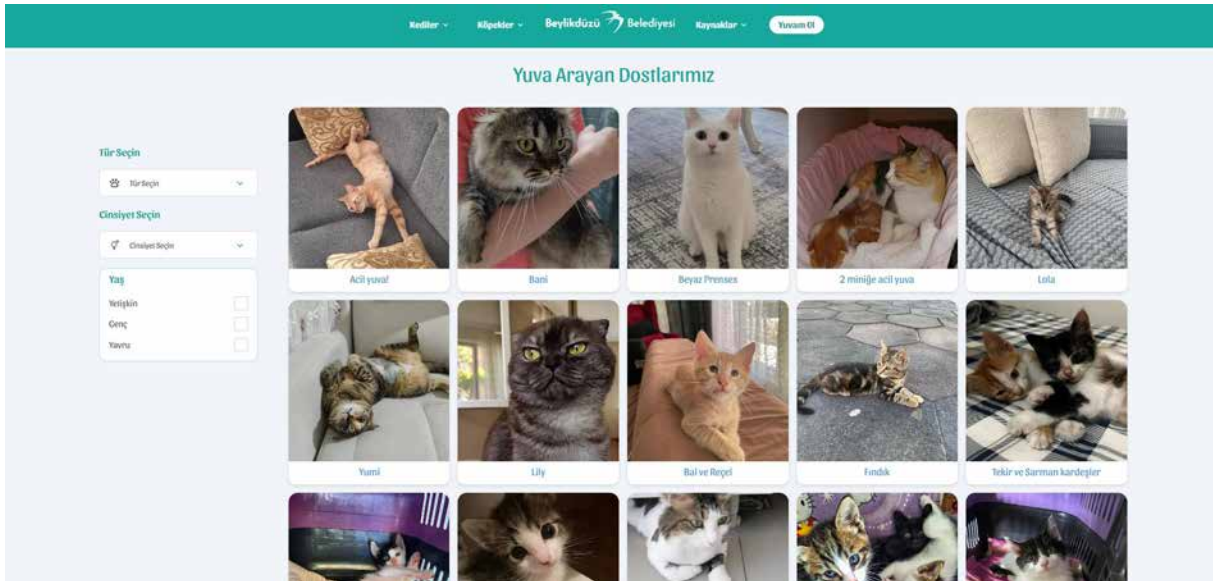
Project Owner
BEYLİKDÜZÜ MUNICIPALITY

Project Category
SMART CITY APPLICATIONS



Prior to new legislation on street animals, a web-based application and information system was developed to streamline the adoption process. Through this system, prospective adopters can directly apply for any animal in the shelter by accessing its individual profile. Applicants can view details such as the animal's name, breed, physical characteristics, and health status.

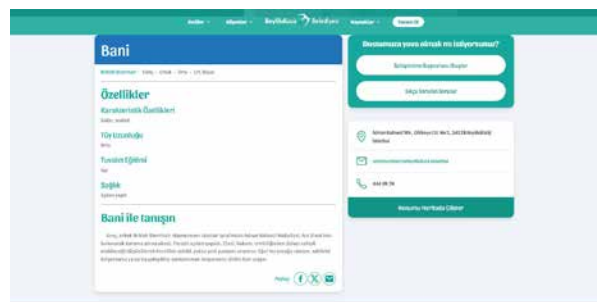
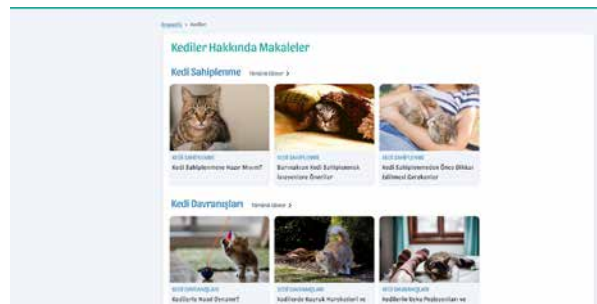
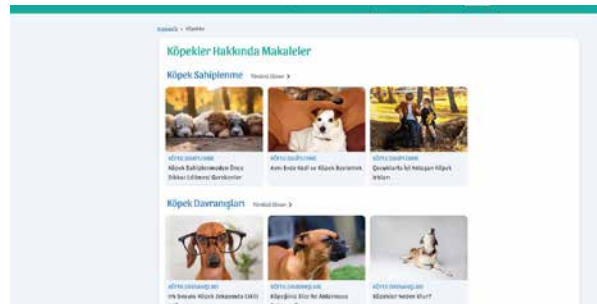
The project aims not only to promote the adoption of stray animals but also to improve the welfare of all living beings in urban life. Guided by the principle that quality of life applies not only to humans but to every living being, it's designed as an innovative tool that supports local authorities' responsibilities for sheltering, healthcare, and adoption with technology.



The platform integrates seamlessly with the online application infrastructure and stands out by offering more comprehensive data than comparable systems. Detailed information on each cat and dog breed in the shelter is provided, and these profiles are enriched with AI-generated visuals.

Coordinated by the Directorate of Veterinary Affairs and implemented in partnership with the District Governor's Office and animal-rights NGOs, the project will remain active as long as there are stray animals within the district and in the shelter.

Current assessments underscore the need for long-term, sustainable solutions in this area. Thanks to its low-cost architecture and easy scalability, the system can be adopted by other municipalities as well, making it a potential good practice model for local governments..



DIGITAL TWIN APPLICATION FOR SUSTAINABLE RAIL SYSTEM OPERATIONS

Project Owner
İSTANBUL METROPOLITAN MUNICIPALITY

Project Category
SMART CITY APPLICATIONS



This project focuses on creating a digital twin model of a rail-system station. The digital twin unifies the station's facility management systems (SCADA, ERP, Energy Management, Passenger Information, Maintenance) AND Building Information Modeling (BIM) on a single platform—enabling more sustainable and efficient operations throughout the station's lifecycle.

As part of the project, data streams from Metro İstanbul's existing systems (SCADA, SAP, Passenger Information, Energy Management) will be integrated with BIM models in a web-based platform. Post-launch analyses—such as predictive maintenance, energy optimization, and train performance reviews—will drive ongoing, sustainable operation of the station. The platform also provides rapid access to maintenance



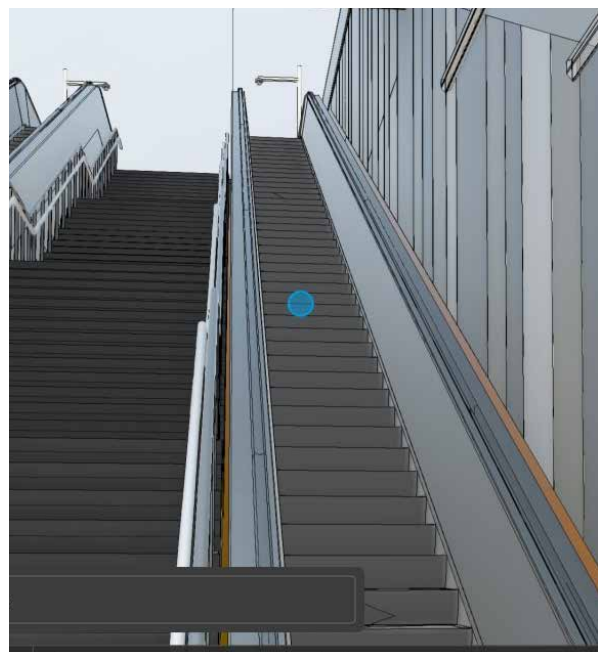
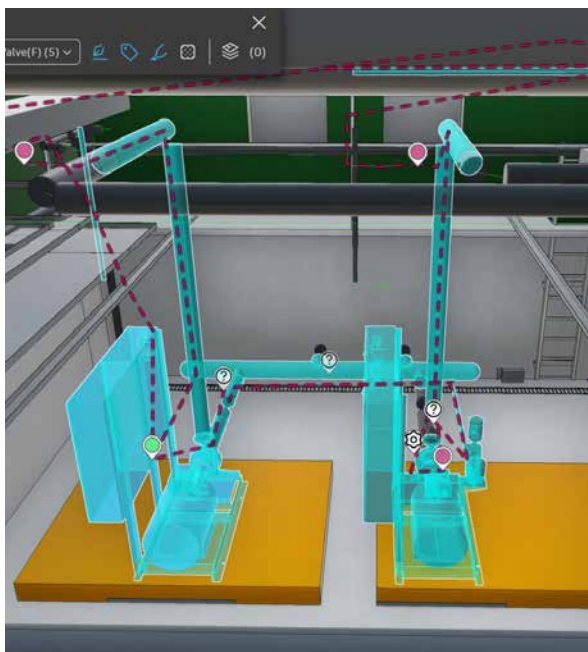
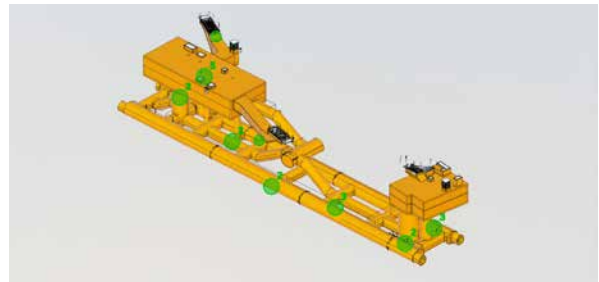


documentation and equipment specifications.

The project's goal is to promote efficient use of urban resources by ensuring sustainable operations in rail networks. Through digital twin analytics, equipment behavior can be monitored to predict failures in advance and take preventative measures. Shorter maintenance cycles will increase asset utilization rates, while smarter energy management will reduce operating costs.

Data from signaling, SCADA, ERP, BIM and energy-management systems will be centralized via the digital twin platform to enable energy savings and failure forecasting. This represents a pioneering application of digital-twin technology in rail transit.

By leveraging data from standard systems, the digital-twin project can be deployed in other municipalities as well. Building on the gains achieved through the digital twin projects of one line in Istanbul, these efforts will continue sustainably across all rail system lines.



EARLY WARNING SYSTEM FOR DISASTERS

Project Owner
SAKARYA METROPOLITAN MUNICIPALITY

Project Category
SMART CITY APPLICATIONS



Landslides stand out as an important risk factor in disaster management. Technological advancements play a key role in facilitating disaster and crisis management, effectively supporting preventive measures before natural disasters like landslides occur. In this context, an Early Warning System for Disasters project has been developed as part of the South Korean

Ministry of Land, Infrastructure and Transport (MOLIT) initiative, the Korea K-City Network Solution Demonstration / Smart City Planning Program. This project, in collaboration with MOLIT, utilizes high-performance sensors and machine learning algorithms to detect ground deformations in real-time and issue warnings in case of potential ground collapse.



This system aims to predict the risks of landslides and other natural disasters and minimize casualties and material damage through early warnings. The project seeks to make cities more resilient to natural disasters. It seeks to make cities more resilient to natural disasters.

The project was carried out in three phases:

1. **Identification of Landslide Areas:** In the first phase, landslide-prone areas were identified, and risk analyses were conducted. Additionally, locations for the installation of early warning systems were determined.
2. **Installation of Early Warning Systems:** Early warning systems were installed in the identified landslide areas.
3. **Sensor Application:** Sensors were integrated into the early warning system to enhance the system's performance.

At the end of a 12-month implementation period, the project aims to prevent damage to both underground and above-ground infrastructure caused by landslides and seismic movements, while protecting the local population from loss of life and property. The early warning system is designed with the awareness that every second is critical during natural disasters and focuses on ensuring public safety.

The early warning system detects vibrations and speeds during a landslide and provides the necessary warnings. In this way, a few seconds are gained during a landslide, enabling the public to take proper protective positions and make necessary preparations. This brief time makes a critical difference in preventing casualties.





Climate Change and Environmental Management

This category includes projects aimed at reducing climate change and/or enhancing adaptation to its impacts, with a focus on sustainable environmental management. These projects include efforts to develop technical, administrative, and financial capacities for climate change mitigation and adaptation, strengthening resilience at the urban level and within local government services. It also covers projects that contribute to the “net zero” goal outlined in the Paris Agreement, as well as sustainable initiatives focusing on key elements of environmental management such as air quality, water management, and waste management. Additionally, projects aimed at protecting the living ecosystem of the Marmara Sea and reducing its pollution are also included in this category.



CLIMATE AMBASSADORS FOR A GREEN FUTURE

Project Owner
AHMETBEY MUNICIPALITY

Project Category
CLIMATE CHANGE AND ENVIRONMENTAL MANAGEMENT



The Climate Ambassadors Project is based on a group of voluntary students aged 11-17 from Ahmetbey and its surroundings. As part of the project, middle school students received training twice a year on climate change and global warming. In addition, environmental awareness was supported through art competitions on "Climate Change and Water Conservation," tree planting events, and visits to various institutions.

The Climate Ambassadors, selected through workshops held at the high school level, actively participated in meetings throughout the process and played key roles in local environmental activities. They contributed to raising awareness in areas such as recycling, zero

waste, sustainable transportation, reducing greenhouse gas emissions, and decreasing carbon footprints in local life, school, and home settings.

The project was carried out in collaboration with sister cities and project partners, boosting environmental awareness and strengthening the understanding of sustainability at the local level. The active participation of young people increased individual awareness, leading to the widespread adoption of environmental consciousness within the community. These developments have strengthened support for local projects that prioritize zero waste, environmental cleanliness, proper waste recycling, and environmental sensitivity.





In the transportation sector, the provision of free public transport and school bus services encouraged the use of public transport. This aimed to reduce personal vehicle use, lower greenhouse gas emissions, improve traffic safety around schools, and enhance local recycling capacity. Additionally, thematic art competitions held for three consecutive years drew attention to the water crisis and raised awareness about water conservation.

On an international scale, activities included study visits to sister cities, efforts to develop sustainable projects with EU grant funding, and participation in annual

meetings organized by the Council of Europe. Events during European Mobility Week, which encouraged cycling and public transport, further supported the adoption of sustainable transportation habits.

These global collaborations increased the local government's capacity to create projects, while raising the region's visibility and institutional prestige. They also provided young Climate Ambassadors with opportunities to familiarize themselves with national and international institutions, collaborate with them, and develop a European vision.

ISTANBUL INNOVATIVE ENVIRONMENTAL EDUCATION CENTER

Project Owner
ATAŞEHİR MUNICIPALITY

Project Category
CLIMATE CHANGE AND ENVIRONMENTAL MANAGEMENT



The increasing population and unplanned urbanization in Istanbul have reduced children and young people's contact with nature, negatively impacting their environmental awareness. A lifestyle disconnected from agricultural production and natural ecosystems makes it difficult to develop individual and societal responsibility for environmental issues. Environmental education often remains theoretical, with limited practical outdoor activities and insufficient focus on current environmental issues, which makes it less effective. At this point, integrating environmental education with the STEM (Science, Technology, Engineering, and Mathematics) approach not only increases environmental sensitivity but also supports

the development of 21st-century skills such as critical thinking, creativity, collaboration, and communication. STEM-based programs enhance individuals' ability to produce science-based solutions and develop sustainability-focused projects. In response to these needs, the Innovative Environmental Education Center was established with the aim of introducing an interdisciplinary approach to environmental education and spreading E-STEM (Environmental-STEM) based practices. The center conducts educational activities for various age groups with the goal of developing lifelong environmental awareness and encouraging active participation in sustainable environmental practices. In this context, the promotion



of environmentally friendly systems such as renewable energy, rainwater harvesting, and aquaponics is carried out, with the goal of raising participants' knowledge and awareness about key environmental issues like climate change, greenhouse gas emissions, and ecological degradation.

The educational program is structured within the framework of a seven-module E-STEM curriculum. Students participating in the activities have developed their knowledge and skills on topics such as ecosystems, biodiversity, global warming, climate change, greenhouse effect, drought, water and soil pollution, erosion, sustainable agriculture, renewable energy, composting methods, and waste recycling and reuse.

Additionally, participants have had the opportunity to engage directly with nature through practical training on growing vegetables and fruits using natural methods. Furthermore, unique projects were developed under the themes of "Sustainable Environment" and "Protection of the Environment" within the framework of Design Thinking and Project Development workshops. These projects were showcased at the Environment and Science Festival.

The Innovative Environmental Education Center continues its work as a dynamic and living structure that combines innovative examples of sustainable living with modern educational techniques to cultivate individuals with high environmental awareness.

GHOST NET AND WASTE CLEANUP IN THE MARMARA AND AEGEAN SEAS

Project Owner
BALIKESİR METROPOLITAN MUNICIPALITY

Project Category
CLIMATE CHANGE AND ENVIRONMENTAL MANAGEMENT



Following the mucilage pollution in the Sea of Marmara in 2022, efforts to clean up ghost nets were launched as part of the Marmara Sea Action Plan. In this regard, a collaboration protocol was signed between Balikesir Metropolitan Municipality and Çanakkale Onsekiz Mart University, and the project was implemented.

Under the first protocol, which lasted three years, an area of approximately 500,000 square meters in the

Aegean and Marmara Seas was scanned, and ghost nets, which harm underwater life and cause microplastic release, along with various other waste, were cleaned up. During this process, about 75,000 square meters of ghost nets and 20 tons of metal and plastic waste were removed from the seas. With the signing of a new protocol in July 2024, the duration of the project was extended for another five years, and cleaning efforts continue.



The project not only focuses on environmental cleanup activities but also includes support programs for local fishermen through partnerships with fishing cooperatives. This initiative promotes sustainable fishing and contributes to regional economic development.

The Ghost Nets Project is being carried out with a holistic approach to improving municipal services in terms of environmental sustainability, thereby enhancing the quality of life in cities. As the first and only municipality in Türkiye to launch this initiative, it stands as a pioneering and innovative model, particularly by being executed by the team that has carried out the most ghost net cleanups.

This unique approach is adaptable not only to the Marmara and Aegean but also to all coastal areas with

intensive fishing activity. It has a scalable structure that can be integrated into each region with equipment and methods suitable for the local marine environment.

The project is also in alignment with the European Green Deal and the EU Common Fisheries Policy (CFP). By focusing on key objectives such as marine ecosystem protection, promoting sustainable fisheries, and transitioning to a green economy, it serves as an exemplary application of the environmental sustainability principles of these significant policy documents at the local level. The project's outcomes contribute to the development of sustainable fisheries policies at the regional level and strengthen existing strategies.



GREEN WORKPLACE

Project Owner
BÜYÜKÇEKMECE MUNICIPALITY

Project Category
CLIMATE CHANGE AND ENVIRONMENTAL MANAGEMENT



The Green Workplace Project, initiated by the Büyükşehir Belediyesi, was developed to promote energy efficiency, reduce environmental impact, and encourage sustainable business models across the district. As a local policy aimed at expanding energy-saving and eco-friendly practices, the project makes a significant contribution to sustainable urban governance.

The initiative focuses on minimizing energy losses, using natural sources efficiently, and reducing waste generation through the use of energy-efficient equipment and systems, improving insulation, optimizing processes, and recovering waste energy. Supporting the environmentally conscious transformation of businesses, this model aims to minimize ecological damage through a

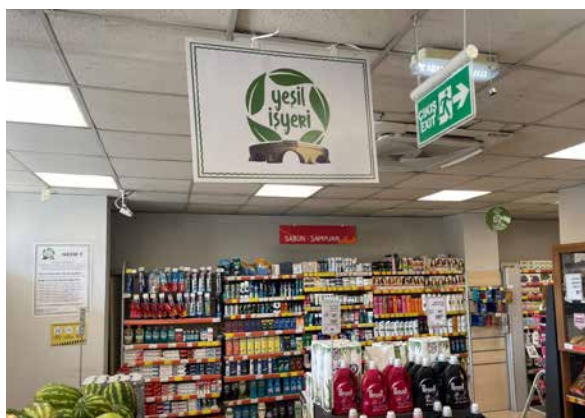
sustainability-oriented approach.

All businesses within the boundaries of Büyükşehir Belediyesi are eligible to apply, and based on their level of energy efficiency, participants are awarded plaques in one of four categories: Bronze, Silver, Gold, or Platinum. These plaques also grant businesses certain reductions in licensing and signage fees.

Thanks to these incentives, businesses are able to lower their energy costs while strengthening their economic resilience. The Green Workplace title not only enhances operational sustainability but also boosts visibility, marketability, and brand value by aligning businesses with environmentally responsible practices.

Project Benefits:

- **Environmental Responsibility:** A business's efforts to minimize its environmental impact are formally recognized and documented.
- **Energy Savings:** Long-term reductions in energy costs are achieved through efficiency improvements.
- **Return on Investment:** Increased energy efficiency enhances business value and strengthens competitiveness.
- **Marketing and Brand Value:** The Green Workplace title promotes an eco-friendly brand image and supports sustainable marketing strategies.
- **Social Responsibility:** Helps businesses demonstrate concrete commitments to both environmental and social responsibility.



Requiring no additional budget, the Green Workplace Project stands out as a scalable, high-impact, and exemplary municipal initiative. With growing interest, the project is accelerating the green transformation of local businesses and contributing to the region's sustainable development.



LIQUID FERTILIZER SUPPORT

Project Owner

ÇATALCA MUNICIPALITY

Project Category

CLIMATE CHANGE AND ENVIRONMENTAL MANAGEMENT



The Animal-Based Liquid Fertilizer Support Project, launched by Çatalca Municipality, aims to strengthen agricultural production, support the development of local producers, and promote environmentally friendly practices. Within the scope of the project, animal-based liquid fertilizer sourced from livestock farms is applied to agricultural lands in coordination with farmers.

This approach helps reduce production costs, increase efficiency, protect soil health by limiting the use of chemical fertilizers, and reduce external dependency. Initially implemented on 2,000 decares of land, the project received positive feedback from farmers and local community leaders, and demand is expected to rise.





Key Contributions and Distinctive Features of the Project:

1. Environmental Protection: Controlled use of animal waste prevents soil and water pollution and supports environmental sustainability.

2. Use of Natural Fertilizer: Replacing chemical fertilizers with natural alternatives preserves soil productivity and promotes sustainable agriculture.

3. Economic Contribution: Lower input costs provide direct economic benefits to farmers and reduce dependency on imported products.

4. Soil and Plant Health: Soils enriched with organic matter exhibit improved physical and biological characteristics, allowing better access to nutrients.

5. Circular Economy: Recycling animal waste into the production cycle supports efficient resource use and waste management.

6. Improved Rural Living Conditions: The project reduces issues like unpleasant odors and visual pollution, enhancing rural quality of life.

7. Climate-Friendly Practice: The reduction of greenhouse gas emissions contributes to efforts against climate change.

The project's success depends on evaluating economic, environmental, social, technological, and legal factors together. Regular monitoring and evaluation of all processes are critical to ensuring long-term sustainability. This initiative serves as an exemplary municipal project that promotes sustainable agriculture, raises environmental awareness, and supports local development.



WASTE-FREE LIFE – WASTE-FREE KITCHEN

Project Owner
ESENLER MUNICIPALITY

Project Category
CLIMATE CHANGE AND ENVIRONMENTAL MANAGEMENT



The Waste-Free Life Project, initiated by Esenler Municipality, is a comprehensive environmental initiative aimed at preventing food waste, reducing pollution, and promoting sustainable living habits. It is designed to raise public awareness and encourage the efficient use of natural resources.

Globally, one-third of all food produced each year is wasted; in Türkiye, this amounts to approximately 26 million tons. The economic cost of food waste reaches

4 billion euros annually. These figures highlight that the fight against food waste is not only an environmental issue but also an economic and social responsibility. In this regard, the Waste-Free Life Project makes concrete contributions to environmental sustainability through a strong sense of responsibility.

Through a range of educational and practical activities, the project raises awareness across all segments of society, with a special focus on housewives and students.





The Waste-Free Kitchen workshops aim to reduce and repurpose household food waste while promoting a culture of zero waste. Similarly, upcycling workshops give new life to unused textile products, reducing waste and supporting the circular economy.

The project also includes plays, seminars, and panels to strengthen environmental awareness at the community level, encouraging conscious consumption and reuse habits. Students gain knowledge on how to repurpose household waste and grow into environmentally aware individuals, while housewives contribute to both their household economy and environmental protection through the skills acquired in workshops.

Beyond preventing food waste, the Waste-Free Life Project also focuses on textile waste reduction and the promotion of sustainable consumption habits. It

plays an important role in combating climate change, as food waste is the third largest source of greenhouse gas emissions globally. This fact underscores the critical need for strategic approaches to waste prevention. Developed in line with Esenler Municipality's environmental policies and sustainable development goals, the Waste-Free Life Project aims to create a more livable world for future generations. Guided by the principle of "conscious consumption, conscious transformation," it seeks to build a more environmentally aware society.



SOLAR ENERGY FOR A CLEAN ENVIRONMENT, CLEAN EZINE

Project Owner
EZİNE MUNICIPALITY

Project Category
CLIMATE CHANGE AND ENVIRONMENTAL MANAGEMENT



The increasing demand for energy and the necessity of combating climate change are making renewable energy sources more important each day. In this context, rooftop solar power systems, with their environmentally friendly design, provide both an economic and sustainable solution. The energy derived from sunlight reduces the use of fossil fuels, decreases greenhouse gas emissions, and directly contributes to sustainable development goals.

The solar power system, planned to be installed on 12,000 m² of the roof area of the newly completed

17,000 m² covered market in Ezine, is designed considering the region's high solar radiation potential. The electricity generated within the scope of the project will be fed into the system through the net metering method with the distribution company; thus, a significant reduction in energy costs will be achieved. The goal is for the solar power plant to cover approximately 70% of the total energy consumption, contributing to the budget and ensuring that public services are provided more efficiently and sustainably at a lower cost.



Since rooftop solar power systems are installed on the roofs of existing buildings, they produce energy without the need for additional land use. This saves space and contributes to the conservation of natural habitats. With the advancement of technology, the efficiency of solar panels and energy storage systems is increasing, and when integrated with smart grid systems, energy management processes are enhanced.

With this project, the goal is not only to produce energy but also to achieve environmental and economic benefits on multiple fronts. Reducing carbon emissions, strengthening energy independence, and decreasing

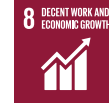
reliance on external sources are key advantages that make the project a strategic investment. Additionally, the employment opportunities created during the installation and operational phases contribute to the regional economy, while the spread of renewable energy applications strengthens public environmental awareness.

Innovative and environmentally friendly rooftop solar power systems stand out as applications that not only address today's energy policies but also shape those of the future. The project in Ezine serves as an exemplary model that supports the vision of sustainable cities.

A SUSTAINABLE GREEN FUTURE IN GÜRSU

Project Owner
GÜRSU MUNICIPALITY

Project Category
CLIMATE CHANGE AND ENVIRONMENTAL MANAGEMENT



The “Sustainable Green Future” Project is a comprehensive environmental management model that integrates climate adaptation and environmental protection goals through a holistic approach. Guided by the principles of zero waste and circular economy, the project aims to create a livable and sustainable environment with a low carbon footprint by reducing waste generation, increasing recycling rates, promoting the use of renewable energy sources, and enhancing energy efficiency.

Through the waste collection and separation structure developed under the project, 730,000 kilograms of waste have been recovered for recycling. Public awa-

reness campaigns targeting businesses, schools, and households have strengthened community participation. New recycling centers have been established, and the capacity of existing facilities has been expanded.

Launched in June 2022, the zero waste mobile app stands out as a digital solution that boosts system efficiency. Households can enter their waste data into the app to schedule pickups. The system automatically generates collection routes and guides field teams. Citizens can track in real-time how much waste they’ve separated, their environmental contribution, and the points they’ve earned. The app also allows users to submit requests and reports, and its adoption even





beyond the district borders highlights the project's impact and the level of public engagement.

The project prioritizes not only environmental but also economic sustainability. Revenue generated from recycling has made it possible for the system to be self-financing.

Significant steps have also been taken in energy efficiency. By switching to eco-panel heating systems in facilities, natural gas consumption has been reduced by 15%. Lighting analyses conducted in offices and facilities led to the adoption of LED systems, resulting in a 300% increase in lighting efficiency and 75% energy



savings. Additionally, the use of digital timers in parks and gardens has reduced energy consumption by up to 40%.

All these efforts are part of a vision to create a sustainable, environmentally conscious, and climate-friendly urban model. The ultimate goal is to implement a carbon-neutral and sustainable municipality approach by reducing and transforming waste, utilizing renewable energy effectively, and ensuring energy efficiency across all operations to build a greener, more livable future.



SUSTAINABLE AIR QUALITY MONITORING NETWORK

Project Owner
İNEGÖL MUNICIPALITY

Project Category
CLIMATE CHANGE AND ENVIRONMENTAL MANAGEMENT



The air quality improvement and climate action project initiated by İnegöl Municipality has been implemented with a holistic approach that supports environmental, economic, and social sustainability. As part of the project, an inclusive climate action plan was developed under seven main headings through collaboration with public institutions, academia, and NGOs. These headings include the creation of a greenhouse gas emission inventory, analysis of sectoral emission distributions, development of mitigation scenarios, vulnerability assessments, identification of sensitivities and exposure levels, definition of adaptation strategies, and formulation of a comprehensive climate action plan.

The greenhouse gas inventory prepared in 2022 provided a strategic roadmap for improving air quality by identifying İnegöl's current climate data and sources of emissions. In the same year, air quality monitoring devices were installed at eight different locations across the city to regularly collect data on PM2.5, PM10, temperature, and humidity. Based on the scientific data gathered, the sources contributing to air pollution are identified and targeted intervention strategies are developed.

Following the identification of industrial waste incineration as a significant contributor to air pollution in industrial zones, a Non-Hazardous Industrial





Waste Collection Center was established. This facility ensures the safe disposal of waste, thereby reducing environmental risks and encouraging environmentally responsible practices among industrial enterprises. The amount of waste delivered to the center rose from 1,453 tons in 2022 to 2,068 tons in 2024, while the number of businesses subject to penalties decreased – indicating the effectiveness of implemented policies and infrastructure investments.

Another prominent issue highlighted in the report is the traffic congestion on the D200 state road that runs through the city center. In response, the construction of a Northern Ring Road and the preparation of a traffic master plan have been proposed. These measures aim to ease urban traffic congestion, reduce vehicle-rela-

ted emissions, and improve overall air quality.

The project also contributes to raising public environmental awareness. In addition to outreach activities targeting industrial facilities, efforts are made to educate residents and promote a healthier living environment.

With its evidence-based management, advanced infrastructure practices, and participatory approach, this project stands out as a model aligned with sustainable urban development goals. It supports a vision for a greener, more resilient, and livable İnegöl, offering long-term environmental benefits through concrete and forward-thinking actions.



IZMIT GULF RE STOCKING PROJECT

Project Owner
KOCAELİ METROPOLITAN MUNICIPALITY

Project Category
CLIMATE CHANGE AND ENVIRONMENTAL MANAGEMENT



The “Feasibility Report for the Izmit Gulf Restocking Project” was prepared with the goals of increasing fish species and diversity in Izmit Gulf, preserving biodiversity and ensuring its sustainability, supporting regional economic development, and enabling the public to make more effective use of marine resources. Based on this report, a partnership was established with the General Directorate of Agricultural Research and Policies (TAGEM), and the implementation phase was conducted under the responsibility of Trabzon Central

Fisheries Research Institute in Trabzon, affiliated with TAGEM.

As part of the project, genetic analyses were conducted on turbot, European seabass and gilt-head bream species collected from the gulf. Juvenile fish reproduced in laboratory conditions were released into the sea from various locations around the gulf once they reached a certain size. In total, approximately 42,000 juvenile fish were introduced into the wild. This process has been supported by scientific monitoring to observe the existing diversity of fish species in the area.





Designed to strengthen the bioecological structure of the gulf, the project also includes strategic actions for the protection of natural habitats. In this context, commercial fishing activities have been banned in the inner and central parts of the gulf by the relevant ministry, helping to prevent overfishing and protect fish populations, thereby supporting the healthy development of the marine ecosystem. The increase in fish populations has also positively affected other marine species and contributed to improved water quality and clarity.

The project also delivers significant social and economic benefits. The restriction of commercial fishing has led to increased interest in recreational and amateur fishing, promoting the sustainability of fishing activities. With the growth of recreational activities such as diving, water sports, and fish watching, regional tourism is gaining momentum and stimulating the local economy.

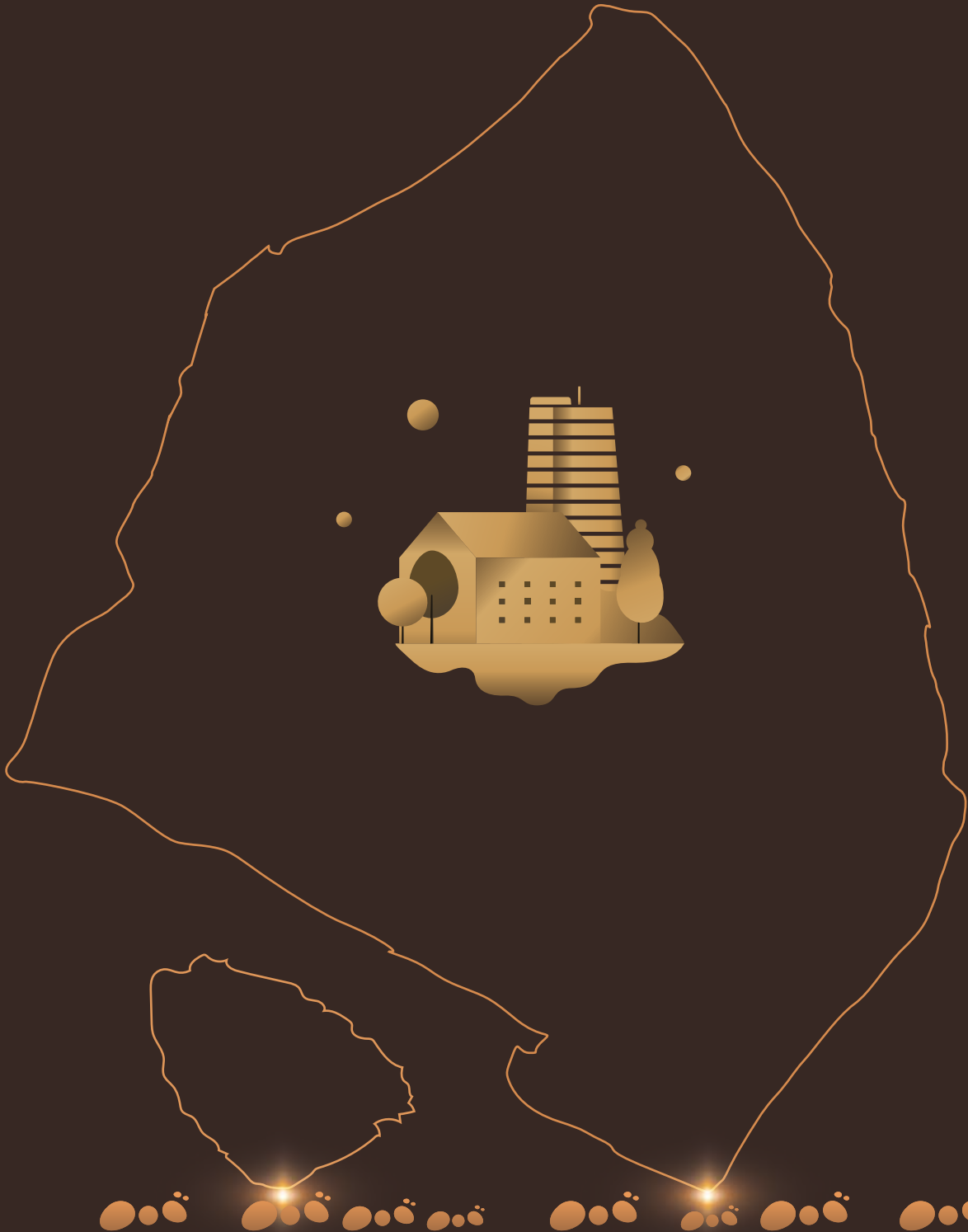
The Izmit Gulf Restocking Project has redefined fishing as more than just a livelihood—elevating it to a cultural asset and form of social heritage. As traditional fishing practices are passed down through generations,

the project provides a strong foundation for cultural, artistic, and heritage-based engagement. A wide range of stakeholders including citizens, recreational fishers, fisheries cooperatives, public institutions, and universities contribute to the project.

This comprehensive initiative, the first of its kind implemented in a marine setting in Türkiye, is progressing in line with sustainable planning and resource management principles. Monitoring activities carried out using fish tagging methods serve as an important tool in tracking population dynamics and collecting fishing data. As a result, the project produces tangible outcomes for both ecosystem balance and the sustainable use of marine resources.

With its integrated approach, the project aims to protect the marine ecosystem in Izmit Gulf, strengthen fish populations, raise environmental awareness, and support socio-economic development. By safeguarding the gulf's natural richness for future generations, this initiative stands as a model of sustainability-oriented environmental policy.





Architecture and Urban Design

Urban design and architectural projects play a crucial role in improving quality of life, supporting environmental sustainability, and addressing social needs by approaching urban spaces from various perspectives, including aesthetics, functionality, and flexibility. These projects aim to ensure functionality within architectural structures and urban fabrics through context-specific design approaches. Additionally, they contribute to the preservation or re-evaluation of the city's characteristic features.

The physical structure of cities, their historical and cultural values, their relationship with natural elements, and social inclusivity are fundamental in these projects. Accessible and inclusive design is adopted for children, the elderly, people with disabilities, caregivers, women, and diverse socio-economic groups, while participatory methods are also emphasized.

In this category, urban design projects, architectural projects, and conservation and restoration projects that prioritize innovation, creativity, resilience, flexibility, participation, sustainability, inclusivity, and climate sensitivity are given priority.



ACTIVE LIVING SPACE PROJECT

Project Owner
BEŞİKTAŞ MUNICIPALITY

Project Category
ARCHITECTURE AND URBAN DESIGN



With the aim of enhancing service effectiveness through data-driven planning, the “Age-Friendly Exercise Area” project was implemented in Yeşim Park, located in Akat Neighborhood—one of the areas in Beşiktaş with the highest population of elderly residents. The project prioritizes identifying the opinions and needs of older individuals through a participatory governance approach.

In this context, a “Workshop on Active Living Spaces” was held in Beşiktaş Cüneyt Arkin Artists Park. During the workshop, participants highlighted that parks are generally designed only for children, there is a lack of accessible information about exercise methods, fear of falling is common during physical activity, and lighting in these areas is often insufficient.

Based on this feedback, on-site applications were initiated in Yeşim Park. A dedicated exercise zone was designed where individuals of all ages can engage in light, moderate, or advanced exercises using QR codes for guidance, without fear of falling. This initiative supports older adults in maintaining physical activity and aging in a healthy and safe environment.

Despite its limited land area, Beşiktaş is a densely populated urban district, with a high daytime population due to its touristic character, universities, and business centers. The proportion of elderly residents is above the national average, which can present challenges in ensuring the inclusion of vulnerable groups in social life. Prolonged social isolation among older individuals may lead to physical and mental health issues. Therefore,





creating safe and accessible spaces for physical activity within the urban setting is of vital importance.

Designing public spaces to meet the needs of older adults, rather than exclusively for children, enhances social inclusion and improves the efficiency of public space utilization. In regions with a high elderly population, planning based on data-driven analyses should be prioritized. In areas where infrastructure and needs assessments have been completed, similar practices that support active participation of older individuals in urban life can be scaled up.

In terms of spatial design, attention should be given to the durability of materials used. Selecting easily replaceable components in the event of damage is key to ensuring the long-term sustainability of such projects.



SENSORY AND EMPATHY PARK

Project Owner

ÇAYIROVA MUNICIPALITY

Project Category

ARCHITECTURE AND URBAN DESIGN



The Disability Center and Learning House in Çayırova were designed as a single integrated complex within a landscaped area of 10,200 m² with an arrangement that aims to create an inclusive environment that does not marginalize individuals with disabilities, fosters empathy, and brings together people with and without disabilities on equal footing. Within this scope, a Sensory and Empathy Park was designed to activate the senses of touch, hearing, smell, and sight, offering rich sensory experiences.

The park adopts an inclusive design approach tailored to various disability groups. Features include a fragrance garden composed of aromatic plants that stimulate the sense of smell; a sensory path with diverse textures on surfaces and walls to enhance tactile awareness; a balance trail promoting physical activity; a hobby garden enabling plant cultivation; as well as walking paths and rest areas that contribute to the holistic layout. The park also contains a sand pit for therapeutic play, an open-air classroom and stage,



a multi-functional play area with musical instruments and water games, and charging stations for electric mobility vehicles.

Areas such as the water play zone, which provides stress relief through play, and the musical play area, which utilizes the therapeutic effects of music, offer inclusive entertainment and learning experiences. The park also includes play structures with ramps for individuals with physical disabilities, ensuring accessible recreation. The balance trail supports the development of skills like climbing, jumping, orientation, and coordination. The fragrance garden, especially beneficial for individuals with autism and those with hearing or visual impairments, strengthens the park's sensory focus with plants known for their strong aromas. To harness the healing qualities of soil and the awareness generated by the cultivation process, a hobby garden was

designed with raised planting beds at different heights and sizes. A sand pit was also integrated into the design, incorporating various play elements to support children's emotional development through tactile play.

This initiative aims to enhance the social skills of individuals with disabilities, encourage their active participation in community life, and increase their access to municipal services. Education and rehabilitation activities are no longer confined to indoor spaces but are extended into open, green environments. By opening this park as a shared space within the Disability Center and Information House, the project reinforces the principle of empathy in urban design and public service delivery.



YENIKENT COMMUNITY SERVICES HUB

Project Owner
GEBZE MUNICIPALITY

Project Category
ARCHITECTURE AND URBAN DESIGN



As an industrial city, Gebze has a dynamic social structure shaped by a large workforce in the production sector and continuous migration. This demographic profile increases the need for accessible social services and necessitates the provision of education, employment, social engagement, and recreational opportunities in an integrated manner. In this context, the service hub located in Yenikent Neighborhood offers convenient access to a wide range of users thanks to its central location surrounded by schools, administrative buildings, and residential areas.

The complex brings together a diverse array of functions under one roof, including education, arts, sports, vocational training, childcare, and leisure,

designed to meet the multifaceted needs of individuals. This centralized approach aims to consolidate social services that are otherwise dispersed throughout the city, creating a comprehensive environment that improves quality of life.

Multi-purpose classrooms and activity spaces promote not only personal development but also community engagement. The kindergarten and childcare unit within the complex support families by offering educational and safe social environments for children.

With indoor sports facilities including a basketball court, fitness and pilates rooms, and outdoor amenities such as a football field integrated into the landscape,



the complex is designed to accommodate all age groups. A tiered seating area, shaped by the site's natural slope, provides both a viewing platform and a resting space for users.

One of the structure's most notable strengths lies in its multifunctional design, which allows individuals from all ages to meet different needs within the same space. The center is particularly beneficial for women, youth, retirees, and those outside the labor force, fostering mental and emotional well-being through consistent interaction and participation.

For young people, the hub offers opportunities for self-discovery through sports and cultural activities, beyond rest and socialization. By promoting outdoor and group activities, the project seeks to reduce digital dependency and encourage healthier lifestyles. In addition to physical and mental health benefits, sports activities help enhance self-confidence, self-esteem, and problem-solving skills among youth.

By serving a wide demographic, this facility not only provides individual benefits but also contributes to social solidarity. It stands as a replicable urban model for accessible and sustainable community living.

ÇUBUKLU SILOS

Project Owner
İSTANBUL METROPOLITAN MUNICIPALITY

Project Category
ARCHITECTURE AND URBAN DESIGN



Situated between Paşabahçe and Kanlıca, overlooking the Bosphorus, the Çubuklu Silos hold a unique place within Istanbul's industrial heritage. Opened to industrial use in the late 19th century to meet the growing energy demand, the area began to serve as a storage site for private petroleum companies from the 1930s onward. Over the years, silo structures of various sizes were constructed.

Initially used for storing food, seeds, and animal feed, the silos later served to store petroleum, minerals, and chemicals. Although not officially designated as a heritage site, the Çubuklu Silos stand today as a rare example of industrial heritage with their distinctive architecture and strong presence in the city's collective memory.

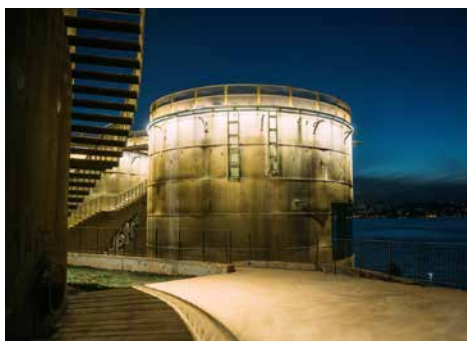
After standing idle for decades and lacking a clearly understood purpose in the public eye, the silos were restored by the Istanbul Metropolitan Municipality in line with international conservation principles. In 2024, they were transformed into a multifunctional complex merging culture, art, and community life. Reimagined with a contemporary approach, the silos now serve as a new cultural and social hub for the Bosphorus shoreline. Since the silo structures are located in an area predominantly occupied by high-income residential housing and fall within the Bosphorus protected area where construction is strictly limited and new development is not permitted, it became necessary to repurpose the heritage site within its existing boundaries and reintegrate it into the city.



Covering a total of 20,000 square meters, the site has become a new point of attraction for the city, thanks to the preservation and repurposing of its original silo architecture and the design of open spaces that seamlessly connect with the shoreline. Today, the area hosts a variety of functions, including a Digital Arts Museum, a Nature and Science Museum, a library, workshops, a performance stage, event spaces, a restaurant, a café, and a Children and Arts Center.

The silos' interiors, which do not require natural light, provide a unique atmosphere for digital exhibitions, making the upper levels particularly well-suited for use as a Digital Arts Museum. Curated by Ars Electronica and produced by Píksel.Creative Solutions, the museum hosted the exhibition "Re Cognition – What is Real?".

With their distinctive architecture bearing traces of an industrial past, the Çubuklu Silos have been transformed into a contemporary hub for culture and life, while also preserving a strong connection to history. This transformation has not only brought a new cultural venue to Istanbul, but also deepened the city's historical narrative.



GREEN VALLEY

Project Owner

KAĞITHANE MUNICIPALITY

Project Category

ARCHITECTURE AND URBAN DESIGN



Green Valley offers a nature-integrated lifestyle with its 165,000-square-meter green space in the heart of the district. Featuring 6 kilometers of cycling and walking paths, it provides a peaceful escape for those looking to disconnect from the urban rush. With thousands of trees and a vibrant variety of plants, the area presents various opportunities for nature enthusiasts and pet lovers. The Companion Paws Park offers a place to

spend time with animal companions, while Hasbahçe Event Area supports the cultural life of the city through concerts and public events.

The project blends historic heritage with modern living. Carefully restored structures including the Mother-of-Pearl Inlay Workshop, Handmade Paper Workshop, Historic Sadabad Rowboats, Sadabad Mosque, Sadabad



Water Cistern, Mahmud II Aiming Stone, Historic Palace Laundry, Sadabad Meeting and Exhibition Hall, and the Sadabad Police Station, allow visitors to experience the traces of the past alongside the present. These restorations contribute to both the preservation of cultural heritage and the touristic appeal of the area.

Social and cultural activity areas also play a key role in the project. Events held at the Hasbahçe Event Area bring residents together and foster community interaction. By enhancing the quality of urban life with a healthier, more social, and culturally rich environment, Green Valley contributes meaningfully to urban development.



Green Valley blends natural beauty with cultural heritage and provides the city with a space rich in aesthetic, social, and environmental benefits.

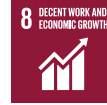
It is a long-term sustainable project aimed at preserving nature, cultural heritage, and community needs. Its expansive green spaces and eco-friendly mobility routes help reduce carbon emissions while preserving local ecosystems. Plant conservation improves air quality and supports biodiversity, the restored structures strengthen cultural sustainability and support the local economy and tourism. By encouraging community participation, the project fosters a sense of ownership and continuity. Overall, Green Valley offers a sustainable urban model that harmonizes nature and culture.



IZMIT PEDESTRIAN PROMENADE REDESIGN PROJECT

Project Owner
KOCAELİ METROPOLITAN MUNICIPALITY

Project Category
ARCHITECTURE AND URBAN DESIGN



The Pedestrian Promenade Redesign Project is a comprehensive urban design initiative aimed at enhancing pedestrian mobility in the city center, improving the quality of public space, and restructuring the transportation system in line with contemporary needs.

As part of the project, the traffic scheme in the area has been re-evaluated, and the service road layout has been revised. Accordingly, Hürriyet Street has been closed to vehicular traffic, while Cumhuriyet Street has been redesigned as a two-lane road running west to east. Designs for service vehicle lay-bys were left at the planning stage to be detailed in the implementation phase.

Vehicle speeds along Cumhuriyet Street have been reduced, transforming the corridor into a route meant for slow-paced driving rather than rapid transit. This approach preserves the commercial vitality brought by vehicle presence while minimizing its overall impact on city traffic. On Hürriyet Street, designated access points have been created to allow service vehicles to enter during specific hours.

An analysis of pedestrian traffic along the promenade was conducted, and key focal points along the route were identified. The design was shaped accordingly, based on three main and three secondary nodes within the project area.



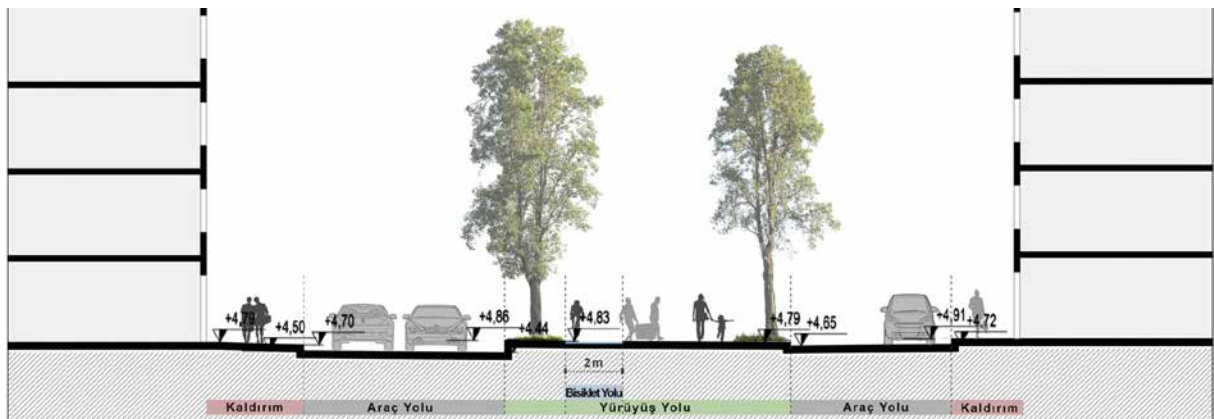
The project has expanded the quantity of public space and introduced a multifunctional urban living environment. These new functions have also contributed to increased commercial activity in the area.

In order for the registered centuries-old plane trees in the area to survive in a healthy way, impermeable hard floors have been removed; permeable concrete material that conveys surface waters underground has been preferred.

Aligned with the values it upholds and the content it

contains, the project was developed in harmony with existing transportation plans. Thanks to its potential for pedestrianization in suitable zones, it also serves as a replicable model for other cities.

Situated in one of the busiest and most strategic locations of the city, the project is designed to adapt to future needs through its flexible structure. With low operating costs and a sustainable design approach, it is expected to serve the city and add long-term value for many years to come.



A MULTIFUNCTIONAL INTERACTION SPACE: NİLÜFER SUGAR BEET WAREHOUSE

Project Owner
NİLÜFER MUNICIPALITY

Project Category
ARCHITECTURE AND URBAN DESIGN



The Sugar Beet Warehouse, a building with significant importance in the urban memory and home to the Sugar Beet Cooperative for many years, has been repurposed as a multifunctional interaction center. The warehouse and its surrounding area, which have been idle for approximately 25 years, have been redesigned to bring a new focus to the city and transform the space into a vibrant living area.

The project, launched in 2023 under the theme “Design for the Second Century,” was shaped through a participatory planning process. In workshops involving diverse stakeholders from the city, the identity and intended uses of the space were discussed, and the design was directed based on expectations and needs. With the slogan “Thinking Together, Designing Together,” it was decided that the building would be transformed into an interaction space where different community groups could establish mutual relationships.





The project aimed to preserve the historic industrial structure while re-evaluating it with modern functions, focusing on the transmission of cultural heritage to future generations and strengthening social participation. On the approximately 10,000 m² site, the project transformed the original 720 m² structure, which comprised the existing warehouse and scale house, into 1,800 m² of enclosed space with the addition of a steel framework.

The renovated former storage building has been converted into a multipurpose hall capable of hosting events such as concerts, seminars, and panels. The common industrial kitchen located in the center of the warehouse, along with the dining area on the upper floor, sets the stage for workshops for women, children, youth, and gastronomic events.

Inside the building, there is also a foyer, exhibition space, shared workspace, meeting rooms, and coding and skill workshops under the “Atelier Nilüfer” initiative. The lightweight structure and transparent design



approach preferred in interiors ensures that the applied details are presented in a simple and readable form.

In addition to the indoor areas, the 6,300 m² of open space has been transformed into a public space that supports social interaction. This area is not only a green park but also serves as an assembly point for emergencies and can host various outdoor activities. The outdoor area includes a children’s playground, a vegetable garden growing medicinal aromatic plants, a tent area, and a café converted from the old scale building.

The structure, which has become a part of the urban memory with its industrial past, has been transformed into a multifunctional interaction center that responds to the contemporary needs of urban life. Beyond the traditional public buildings, this new-generation public space stands out with its transparent and inviting design, contributing to the city as a living area where decisions are made together, productions are created together, and a shared future is fostered.



BOĞLUCA LIFE VALLEY

Project Owner
SİLİVRİ MUNICIPALITY

Project Category
ARCHITECTURE AND URBAN DESIGN



The Boğluca Life Valley Project is a comprehensive five-phase development that begins where the Boğluca Stream meets the sea, extending 3,052 metres in length and covering an area of 165,196 m². It provides a multifunctional space where residents of all ages can enjoy leisure activities.

Thanks to its functional features, the project enables users to meet their social needs without having to travel far from home, and alleviates the intense usage pressure on Silivri's coastal promenade. This also contributes to easing traffic congestion in both the town centre and the coastal area.



With its wide range of functions and ample public space, Boğluca Life Valley eases overuse of the shoreline and creates an important hub for social and recreational activities. The project includes walking paths, children's playgrounds, landscaped gardens, an open-air amphitheatre, a decorative pool, the Atatürk statue, outdoor fitness equipment, social facilities, an artificial pond, pedestrian bridges, a tennis court, basketball courts, football pitches with team changing rooms, street furniture, a street games area, parking areas, and colorful façade enhancements.

By enriching the city's social life and meeting regional recreation needs, the Boğluca Life Valley Project is expected to serve Silivri's residents and visitors for many years to come, boasting a sustainable design that ensures long-term viability.





Arts and Culture

Municipalities carry out various activities to preserve and promote the historical, geographical, cultural, and artistic values of the cities they serve. These efforts aim both to strengthen the sense of urban and social belonging among local communities and to promote these values both nationally and internationally.

In this regard, municipalities play a key role in enhancing the appeal of cities by harnessing the power of arts and culture to transform societies and foster a sense of identity and belonging. Arts and culture projects aim to encourage public participation and engagement, support amateur artists and cultural initiatives, raise awareness of the arts within society, and strengthen urban memory.

In addition, by promoting the inclusion of art forms such as literature, painting, music, and dance in daily life, these projects seek to spread aesthetics, grace, and peaceful expression throughout society. Projects that amplify the expression of individual and collective emotions and ideas in urban life are considered within this category.



CLASSICAL SUNDAY

Project Owner
ÜSKÜDAR MUNICIPALITY

Proje Category
ARTS – CULTURE



The Classical Bazaar project was launched to enrich the cultural and social life of Üsküdar. Organized every Sunday with the motto “Bring Your Own Chair,” this free and open-air event is held in the lower garden of Nev-Mekan Sahil and has hosted numerous distinguished musicians, virtuosos, and composers.

By connecting Üsküdar residents with classical music, Classical Sunday transforms Sunday evenings into engaging musical gatherings. The series showcases the rich heritage and melodies of classical music through original performances in an accessible setting.

The event has created an inviting atmosphere that

fosters social cohesion, aiming to strengthen the role of classical music in everyday life. It has demonstrated that classical music is not limited to a specific socio-economic group, but instead presents an inclusive platform for all members of society.

By making typically paid classical music concerts freely available, Üsküdar Municipality has taken an important step toward cultural equity, ensuring equal access to municipal services for all residents. Whereas people would normally need to travel to city centers to enjoy such performances, Classical Sunday has brought cultural vibrancy to the district itself, reversing the usual flow of cultural participation.

This project reflects a departure from one-dimensional service models of the past, embracing a more inclusive cultural policy that supports diverse genres and communities.

Classical Sunday raises public interest in and understanding of classical music, allowing this universal art form to reach broader audiences. As an open-air initiative, it offers a highly adaptable and sustainable cultural model.



BOOKS DOCUMENTING THE INVENTORY OF KÜÇÜKÇEKMECE'S HISTORY, NATURE, CULTURE, AND LITERATURE

Project Owner
KÜÇÜKÇEKMECE MUNICIPALITY

Proje Category
ARTS – CULTURE



For local governments, cultural studies are of great importance in bringing to light, documenting, preserving, and recording the history, natural beauties, material and aesthetic values of a district. Within this framework, four fundamental books have been published that address the history, nature, literature, and cultural structure of Küçükçekmece.

In addition to these publications, field research conducted in 21 neighborhoods of the district led to the preparation of books specific to six different neighborhoods, and a total of 10 publications have been created to comprehensively document the cultural diversity and historical heritage of Küçükçekmece. As a result, the majority of the district's cultural inventory has been documented and preserved in written form.

The historical buildings, archaeological sites, and elements of cultural heritage found throughout the district represent a rich tapestry—not only through their physical presence, but also through the stories they hold in oral history and collective memory.

As part of the documentation efforts, the identified structures and cultural assets have been integrated into the national cultural inventory database and registered within the relevant systems of the Ministry of Culture and Tourism. This has ensured the long-term preservation of the district's historical and cultural values, contributing significantly to the safeguarding of its heritage.





By securing the transfer of these historical assets to future generations, the project has also opened up new fields of study for scholars working in the fields of arts, culture, and the social sciences. Moreover, it serves as a reminder that municipal cultural departments are not

merely event organizers; they also carry the responsibility of uncovering, preserving, and promoting the unique historical, natural, and cultural assets of their communities.



Social Services

Social services refer to initiatives aimed at improving urban quality of life and social well-being, with a particular focus on disadvantaged groups while addressing the needs of all segments of society. Under this category, projects include specialized services for women, children, youth, the elderly, migrants, persons with disabilities, individuals struggling with substance abuse, disaster survivors, and socio-economically disadvantaged individuals. Projects including education, healthcare, housing, psychosocial support and social assistance aim to enhance access to basic rights and services, strengthen social solidarity, and promote social inclusion. These efforts also encompass projects that encourage active participation in economic and social life, while building resilience during times of crisis. Projects that prioritize social justice and equality, and are committed to ensuring that no one is left behind in urban life, are evaluated within this category.



GERONTOARCHITECTURE SOCIAL SERVICE PROJECT

Project Owner
BEŞİKTAŞ MUNICIPALITY

Proje Category
SOCIAL SERVICES



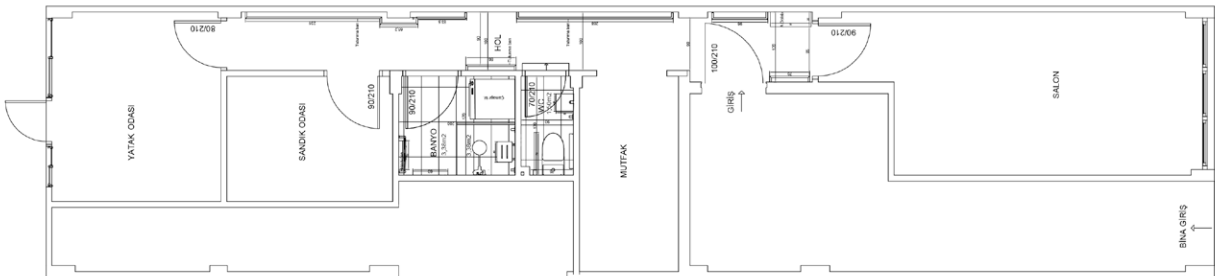
With aging comes a decline in physical functions and reduced mobility, which can make it more difficult for older adults to maintain independent living. This creates a growing need for spatial adjustments within homes that are tailored to the specific needs of the elderly. When overlooked, such adaptations can result in a rise in domestic accidents. While the elderly population in Türkiye stands at 10.2%, in the Beşiktaş district, this figure reaches 17%. Additionally, the proportion of older adults living alone in the district is notably high. Studies reveal that a significant number of elderly individuals are hospitalized due to home-related accidents.

The Gerontoarchitecture Project aims to enhance the safety and independence of older adults in their own homes by providing targeted design interventions. Based on the individual's physical and cognitive conditions, the project makes architectural modifications to improve accessibility and safety within living spaces.

Each intervention is planned considering the resident's personal needs, health condition, and current housing layout. Examples include narrowing open spaces to reduce fall risks, removing door thresholds, installing non-slip flooring, optimizing lighting, adding grab bars in bathrooms, securing furniture, and softening sharp corners.

The project begins with a social assessment, including an income evaluation of the applicant. For individuals who are unable to cover the cost, all modifications are provided free of charge. Those who meet income criteria receive design proposals and consultancy throughout the implementation process.

This project goes beyond physical modifications—it also aims to raise public awareness. The service not only supports older individuals but also informs contractors involved in urban renewal about age-friendly housing standards, aiming to promote the develop-

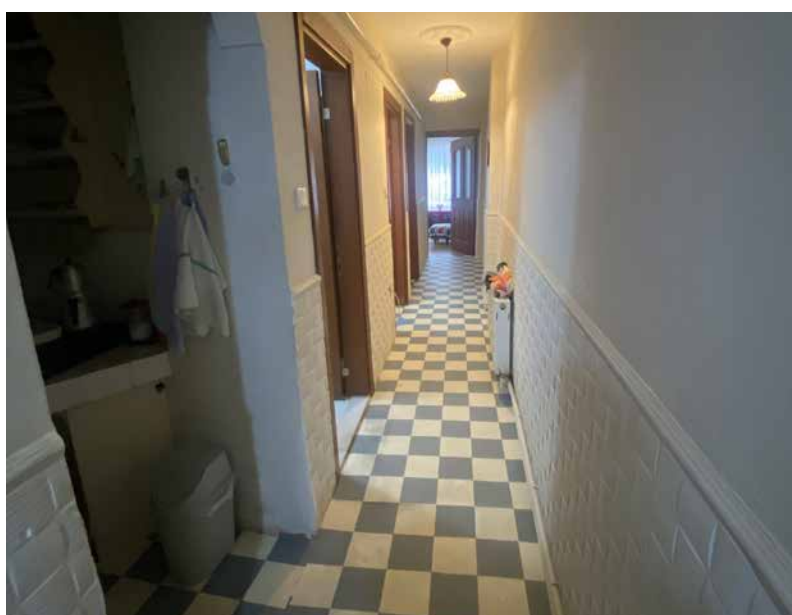
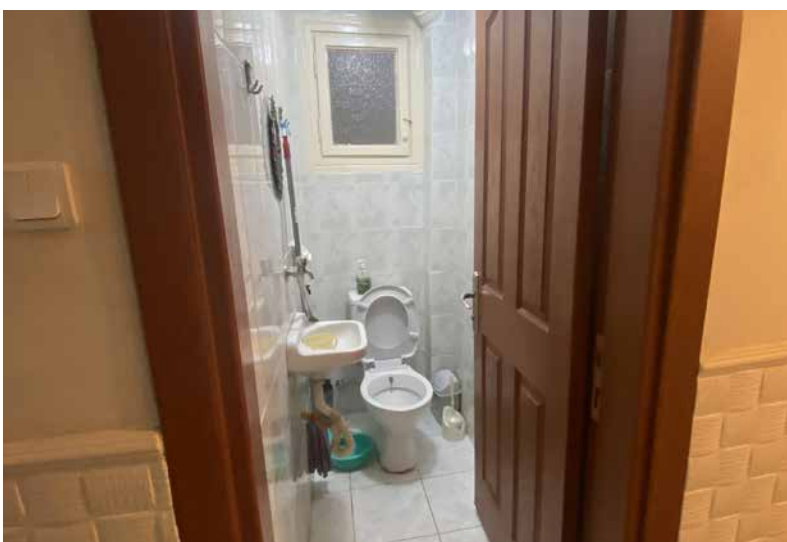




ment of safer and more inclusive living environments in disaster-prone areas.

Age-friendly design supports not only the elderly but all users, based on universal design principles. Such modifications benefit children, people with disabilities, and individuals with temporary mobility limitations.

Therefore, age-friendly spaces are ultimately human-friendly spaces. Globally, the concept of “age-friendly” environments is increasingly being replaced with “people-friendly” design, highlighting the growing relevance of inclusive design. This project also seeks to foster early awareness of aging and promote active aging across all age groups.



CEMAL SÜREYA EARLY CHILDHOOD AND CHILDREN'S WORKSHOP

Project Owner
BİLECİK MUNICIPALITY

Proje Category
SOCIAL SERVICES



The Cemal Süreya Early Childhood and Children's Workshop offers tailored programs for two age groups: babies (0–3 years) and children (4–12 years).

In the early childhood (baby) workshops, 45-minute activities are held to support fine and gross motor skills as well as cognitive development. These sessions are designed for babies to attend with their parents.

The children's workshops, targeting ages 4–12, focus on developing analytical thinking skills and reducing screen time by encouraging meaningful peer interaction. The program includes a wide range of activities related to astronomy, aviation and space, math through play, digital engineering, LEGO building, chess, and many more.

This center provides an alternative space for families who wish to spend quality time with their children amid the fast pace of urban life. It enhances parent-child interaction while supporting children's social and emotional development.

The project serves as a strong example of how local governments can go beyond basic infrastructure and services to implement impactful initiatives in social, cultural, and educational spheres.

It also offers tools for parents to actively support their children's development and encourages greater community engagement and solidarity by strengthening social bonds among families.

The Cemal Süreya Early Childhood and Children's Workshop is the first and only workshop in Bilecik that offers services in this field.

With suitable physical space and curriculum design, it presents a model that can easily be replicated by other municipalities. Its adaptable and scalable structure makes it an inspiring reference for local governments. Additionally, the repurposing of an underused building for public service adds a layer of innovation to the project.



WOMEN WELDERS ARE GROWING!

Project Owner
KADIKÖY MUNICIPALITY

Proje Category
SOCIAL SERVICES



The “Women Welders Are Growing” project, launched in 2023, was created in collaboration with the Kadıköy Municipality, the Türkiye Soroptimist Clubs Federation Ataköy Club, and the Gedik Education Foundation. The aim of this project is to support gender equality and encourage women’s participation in male-dominated professions. By increasing the employment of women in technical and industry-based fields, such as welding, the project aims to shift the societal view that professions should be gendered.

This project trains women to become welders, demonstrating that professions cannot be defined by gender, and contributing to women’s economic independence. Offering free and high-quality educational opportunities, the project is an important

step toward reducing inequality of opportunity.

Through the free training program, women gain professional qualifications in welding. At the end of the course, participants take an exam to receive a Vocational Qualification Certificate, which is internationally recognized, and successful candidates are eligible for employment as skilled workers in the industry.

This initiative is a sustainable and transformative effort developed through cooperation between local governments, civil society, and educational institutions. It not only contributes to the economic and social empowerment of women but also aims to break down stereotypes related to gender equality.

The project's key contributions include:

- Leading the way in the employment of women in technical and industrial sectors, transforming gender-based perceptions of professions.
- Supporting women's economic independence through vocational training.
- Reducing inequality of opportunity by providing free and high-quality education.
- Challenging societal norms by promoting the understanding that "professions have no gender."
- Adding skilled female labor to the sector, contributing to production capacity.
- Supporting Kadıköy Municipality's vision of gender equality by encouraging the active participation of women in urban life.



The sustainability of the project is ensured through multi-stakeholder cooperation, continuous educational opportunities, and a focus on employment. This model is adaptable not only in Kadıköy but also in other cities and municipalities. Its replicable and scalable structure allows for ongoing training and can inspire local governments and institutions.

By increasing women's participation in technical fields, the project helps enhance their visibility in the economic sphere and contributes to the social and economic balance of urban life. This model, which breaks societal stereotypes about career choices, serves as an inspiring example for not only the women directly involved but also for many others who follow their path.



BI'MOLA: A LIFE CENTER BEYOND DISABILITY

Project Owner
KÜÇÜKÇEKMECE MUNICIPALITY

Proje Category
SOCIAL SERVICES



Bi'Mola (A Breather) Life Center Beyond Disability is a comprehensive support facility designed to foster the social, emotional, cognitive, linguistic, and physical development of children with special needs between the ages of 4 and 17. Using a play-based developmental approach, the center not only addresses each child's individual needs but also offers families a valuable moment of a breather.

At Bi'Mola, a wide range of services are provided, including individual education programs, group activities, art workshops, equine-assisted therapy, speech

therapy, dietitian services, and ongoing assessment and monitoring. Tailored by expert child development specialists, individual programs meet each child's unique developmental stage, while group sessions help strengthen peer interaction and social skills.

The Monitoring and Evaluation Room allows for close observation of each child's progress. Standardized tools—such as the Denver II Developmental Screening Test—enable early detection of possible developmental delays. This makes it possible to create timely and appropriate intervention plans for each child.





In addition to in-house activities, the center also organizes trips and cultural events to encourage the children's participation in community life and support their social integration. Counseling and guidance services are offered to families, helping them better understand and respond to their children's developmental needs while also providing psycho-social support.

Bi'Mola offers a holistic social service model that enhances the quality of life for both children and their families. With a focus on equal opportunity and social inclusion, the center provides a safe and empowering

environment where children with special needs can thrive.

For children with special needs and their families living in Küçükçekmece, Bi'Mola is not only a place for individual support but also a vital resource that strengthens community integration. By expanding the municipality's social service capacity and reinforcing the values of inclusive governance, this model promotes equal access, improves overall well-being, and contributes to a solidarity-based urban social fabric.

ORHANGAZI SOCIAL DEVELOPMENT CENTER

Project Owner
ORHANGAZI MUNICIPALITY

Proje Category
SOCIAL SERVICES



The Orhangazi Social Development Center is a comprehensive community hub offering courses in ceramics, traditional arts such as hüs-n-i hat (Islamic calligraphy) and ebru (paper marbling) aviation, computer science, music, folk dance, wood design, and Turkish language for foreigners.

Its primary mission is to fill the gap in social and cultural programming within the district, supporting personal development while bringing together disadvantaged groups—such as individuals under temporary protection, women and children facing family hardship, people with disabilities, incarcerated youth, and at-risk children and teenagers—to foster social cohesion.

Originally founded as a computer workshop, the center expanded its offerings in response to community demand, guided by a district-wide foreign language survey. Embracing an inclusive, participant-driven philosophy, it has evolved beyond a place you visit only for class hours, it now functions as a vibrant gathering space open throughout the day.

With over 80% of participants being women and young people, the center provides training in areas such as entrepreneurship, fundamental rights and freedoms, and disaster awareness to cultivate civic responsibility and practical skills. The center also offers childcare so that mothers with young children who might otherwise struggle to participate can join the courses.





Designed for accessibility, the facility features barrier-free entry and a mix of indoor and outdoor areas where learners can socialize between sessions. Staff receive ongoing training in gender equality, inclusion, and effective communication with marginalized communities to maintain high service standards.

To ensure financial sustainability, the center operates like a social enterprise: its board is composed entirely of young course participants, and products crafted in the workshops are marketed and sold. By showcasing and selling these products at fairs and exhibitions, the

center covers material costs and keeps its volunteer programs going. Thus, the center can continue its activities in a sustainable manner without external funding.

Since its foundation, the Orhangazi Social Development Center has served people of all ages, backgrounds, and income levels. It has earned national championships in various competitions, trained pilots and cabin crew, and empowered numerous women to enter the workforce.

PAWPRINT

Project Owner
SAKARYA METROPOLITAN MUNICIPALITY

Proje Category
SOCIAL SERVICES



The Pawprint Project is a comprehensive initiative aimed at improving the well-being of stray animals and ensuring environmental sustainability. It traces its roots back to 2006, when the Temporary Shelter and Rehabilitation Center for Stray Animals was founded, and was expanded on June 18, 2021 under the Pawprint banner. Its core mission is to provide safe, eco-friendly habitats for stray animals. To that end, shelters made from recyclable materials, irrigation systems fed by natural water sources, and native plantings together create a green, self-sustaining environment.

By producing its own pet food on-site, the project has cut costs by 50%, greatly boosting economic efficiency. The “Follow the Pawprint” campaign encourages adoption by regularly sharing photos and care needs of shelter animals via the municipality’s Instagram

account (@sbbbakimevi), raising public awareness and driving adoption rates upward.

The project also fills gaps in the city by offering a variety of social spaces. Dog parks, a pet café, the Paw Shop, and the Animal Kingdom Library give pet owners safe, enjoyable places to gather, while partnerships with local businesses foster community solidarity. Pet-friendly hotels provide cat and dog owners with free accommodation and meals, boutiques hand out complimentary tote bags, and cafés serve free coffee. These collaborations strengthen ties with local commerce and boost social well-being.

The Pawprint Project stands out for its innovative approach. By creating natural habitats enriched with social amenities—such as dog parks and open pad-



docks—it helps manage the stray animal population while enhancing public safety. The project also offers a wide range of services, including dedicated spaces for animals with disabilities. This model not only advances environmental and social sustainability but, through its partnerships, helps guarantee long-term success.

The Pawprint Project isn't just a Sakarya success story—it's a blueprint for other cities. By combining social amenities with partnerships alongside local businesses, municipalities can create animal-friendly, sustainable living spaces. In doing so, they boost both environmental and social resilience while raising residents' quality of life and strengthening community bonds.



A GOOD START

Project Owner
SULTANBEYLİ MUNICIPALITY

Proje Category
SOCIAL SERVICES



The A Good Start Project is a comprehensive initiative that leverages Sultanbeyli's large population of children and young people to support the physical, cognitive, and socio-emotional development of children in early childhood. It is built around six key program areas:

- Home-Based Family Guidance Program
- Center-Based Family Guidance Program
- Core Messages Skill-Building Workshops for Parents
- Public Seminars for Parents
- Mobile Playgrounds
- Premarital Education Program



For new mothers with infants aged 0–12 months, the Home-Based Family Guidance Program offers in-home visits designed to bolster maternal mental health and raise awareness of healthy feeding and physical care practices. Mothers of children aged 12–36 months participate in the Center-Based Family Guidance Program, which brings families together on-site for group support and learning.

Parents took part in Core Parenting Skills Workshops—with themes like “Show Your Love,” “Talk With Them,” “Play Together,” “Praise and Guide,” “Read Together,” and “Take Care of Yourself”—to support their children’s development. These workshops were further reinforced by seminars on attachment, sleep, nutrition, positive parenting, play, challenging situations, home safety, and managing screen time.

Mobile Playgrounds have proved hugely popular, giving countless children the chance to learn through play in

safe, engaging pop-up play spaces. Under the Prenatal Education Program, couples attend seminars on “Communication and Life Skills in Marriage,” “Family Law,” and “Marriage and Health.”

To ensure these services endure, an on-site Family Education Center was established under the Social Support Services department, embedding the project’s programs into Sultanbeyli Municipality’s regular offerings.

Beyond simply supporting the families it serves, the project contributes to broader social transformation by highlighting the critical importance of early childhood. By equipping parents to maximize their children’s development, the initiative creates long-lasting community impact. Its sustainable model—anchored by the Family Education Center—offers a replicable framework that other municipalities can adopt to foster healthy starts for their youngest citizens.



ACTIVE AGING

Project Owner

ÜMRANİYE MUNICIPALITY

Proje Category

SOCIAL SERVICES



The Active Aging Project is a community initiative designed to boost quality of life and foster social participation among residents aged 60 and over in Ümraniye. Guided by the “active aging” model, it encourages the elderly to remain physically, socially, and mentally engaged so they can enjoy a healthy, independent lifestyle.

Tailored for retirees who want to stay active, reduce isolation, strengthen community bonds, and give back to their neighborhood, the project offers a diverse range of programs that reflect Ümraniye’s socio-eco-

nommic and cultural variety. By focusing on the elderly’s unique needs and aspirations, it delivers holistic, sustainable services.

Through a series of workshops, classes, and events, the municipality acts as a bridge—preserving the elderly’s roles and potential in society while expanding their opportunities for social engagement and autonomy. These efforts not only improve health outcomes and curb isolation but also empower the elderly to play a more active role in community life.





Key offerings include physical activity classes, mentally stimulating games and exercises, social gatherings, and occupational therapy sessions. These services make everyday life richer and more meaningful. In addition, intergenerational activities and volunteer networks connect the elderly with younger residents, fostering mutual support and a stronger sense of belonging.



Occupational therapy is a cornerstone of the project: participants can join creative workshops in handicrafts, gardening, painting, ceramics, and sewing. These hands-on activities build new skills, boost confidence, and deepen social ties, helping attendees feel productive and connected.

Overall, the Active Aging Project leverages municipal resources to enhance the elderly's health, well-being, and community involvement—creating a model for sustainable, age-friendly urban living.





Urban Planning and Infrastructure

Urban planning and infrastructure encompass efforts that shape the development and future of cities, including urban transformation, renewal, and rehabilitation practices aimed at creating more resilient and inclusive living spaces, as well as activities related to the monitoring of these processes.

Works that adhere to contemporary urban planning principles, prioritize public interest, respect the value of natural and cultural heritage, and innovative approaches that are crucial for the continuity of urban life are of great importance. These studies are evaluated within the scope of ensuring livability, disaster resilience and standards in various areas of urban planning, from land and site selections to density distributions, from the integration of infrastructure systems to the relations between housing, trade, urban amenities and business centers.



SMART CITY PLATFORM- SMART MUNICIPAL MANAGEMENT SYSTEM

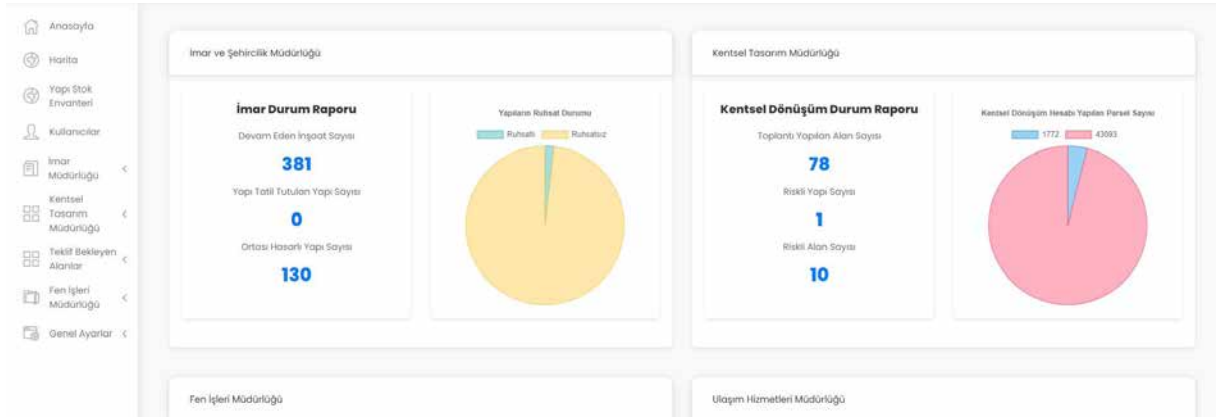
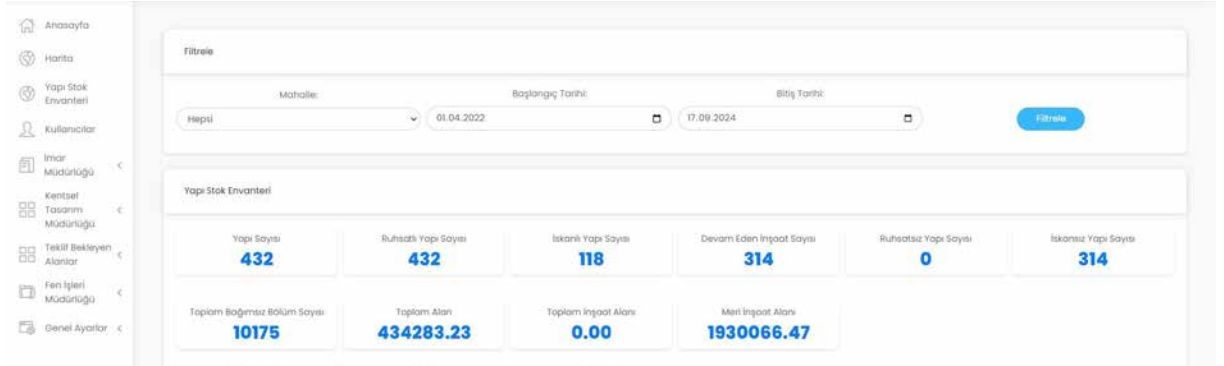
Project Owner
BAĞCILAR MUNICIPALITY

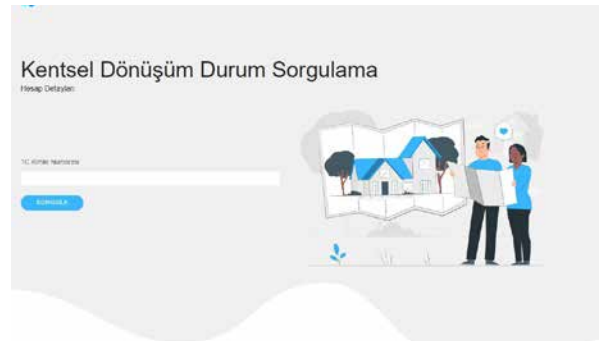
Proje Category
URBAN PLANNING AND INFRASTRUCTURE



The Smart City Platform is an innovative system that offers intelligent solutions for urban governance by digitizing municipal services. By transferring a wide range of municipal operations—such as urban transformation, zoning procedures, and licensing processes—into a digital environment, the project provides significant convenience for both citizens and municipal staff. The platform enhances efficiency and transparency, accelerating processes while enabling all operations

to be monitored in real time. Its digital infrastructure, integrated with Geographic Information Systems (GIS), allows for more accurate and effective urban planning and management. This platform makes it easier for municipalities to meet the demands of the digital age while also strengthening the concept of sustainable urban management. This system marks a major step toward the digitalization of municipal services in Türkiye.





By accelerating planning and administrative processes, the platform improves the quality of services and facilitates citizen access. Urban transformation, zoning, and licensing procedures have been digitized and made transparent. With advanced GIS integration, urban data is visualized and all physical and digital assets in the city can be monitored and managed in real time. Citizens can easily access municipal services via the platform, accurately submit their requests, and track the progress of ongoing processes. GIS-based data also enhances the efficiency of urban planning, infrastructure management, and urban renewal projects.

Thanks to its modular structure, the platform can be easily adapted and customized for use by other municipalities across Türkiye.

The Smart City Platform supports sustainability through its digital infrastructure and smart city solutions. With a digital twin model, it contributes to urban planning and management by enabling real-time data monitoring, analysis, and faster, more accurate decision-making. Its flexible design allows it to keep pace with technological advancements and ensures the efficient management of environmental, social, and economic resources for a sustainable urban life.

LIQUEFACTION HAZARD MAP AND IDENTIFICATION OF HIGH-RISK ZONES

Project Owner
EZİNE MUNICIPALITY

Proje Category
URBAN PLANNING AND INFRASTRUCTURE



Many countries around the world, especially Türkiye, remain vulnerable to natural disasters. Earthquakes, in particular, are among the most destructive natural phenomena, often leading to severe loss of life and property. In this context, the concepts of liquefaction, hazard mapping, and earthquake-resistant construction play a fundamental role in disaster risk reduction.

Liquefaction refers to the phenomenon in which water-saturated sandy or silty soils temporarily lose their carrying capacity and behave like a liquid during an earthquake. Ground vibrations that occur in this process may weaken the ground structure and cause the structures to collapse or overturn. This phenomenon, commonly encountered in major urban areas and coastal regions, stands out as a significant geotechnical issue in civil engineering. The liquefaction risk, which

poses a threat to structural safety, should be assessed through detailed soil investigations conducted prior to construction.

Located in a first-degree earthquake zone and featuring alluvial soil due to the Akçin Stream passing through its center, Ezine is considered a high-risk zone for liquefaction. As part of the project, drilling operations were carried out to collect detailed data on local soil characteristics, which were then used to produce a liquefaction hazard map. Based on these findings, high risk zones were identified, and appropriate soil improvement methods were proposed to mitigate potential impacts.

These analyses form the basis for the creation of hazard maps, which are essential tools in disaster



planning. Hazard maps illustrate the likelihood and potential impacts of natural disasters in a given area. Earthquake hazard maps are developed through the evaluation of soil types, groundwater levels, historical earthquake data, and geological information, and they guide planning and construction processes. In this way, necessary precautions can be taken in high-risk zones to mitigate potential damage.

Based on the soil studies conducted, ground improvement practices have been made mandatory across the region during the zoning and construction permitting phases. Engineering methods such as bored piles, jet grouting, and injection techniques are used to enhance



soil bearing capacity and reduce the risk of structural damage.

Earthquake-resistant structures are designed and constructed in accordance with engineering principles to minimize damage during seismic events. In addition to material quality, structural systems, and construction techniques, soil behavior plays a critical role in ensuring structural safety. Therefore, incorporating ground conditions into the design and construction process is crucial for reducing disaster risks.



HISTORICAL CITY WALLS PEOPLE'S GARDEN

Project Owner
FATİH MUNICIPALITY

Proje Category
URBAN PLANNING AND INFRASTRUCTURE



The City Walls of Istanbul, a UNESCO World Heritage Site, stretch approximately 6.6 kilometers from the Golden Horn to the Sea of Marmara, forming the western boundary of the Historic Peninsula. Constructed in 447 AD by Byzantine Emperor Theodosius II, the walls were built to protect the city from land-based attacks and are of great historical and archeological importance. The structural system, comprising a moat, outer and inner terraces, and outer and inner walls, is regarded as one of the most outstanding examples of ancient military architecture.

The project aims to highlight the historical, cultural, and spatial significance of the city walls while also addressing surrounding urban challenges. Along the Ayvansaray–Topkapı–Yedikule route, pedestrian and cycling paths as well as green spaces have been planned. The People's Garden Project draws inspiration from the early Republican-era Prost Plans. With the creation of a green corridor along the City Walls, the project aims to seamlessly connect the coastlines of the Golden Horn and the Sea of Marmara.

Located within the UNESCO World Heritage Site, the City Walls People's Garden is a green infrastructure project developed in close proximity to the 1,500-year-old historic structure. It contributed to a 41% increase in green space within Fatih district over a four-year period, largely through project implementation. The project offers a space of both recreational and historical value for residents and visitors alike.



Planned functions include a garden featuring endemic plants of Istanbul and medicinal and aromatic herbs, bike paths, fire-free picnic areas, children’s playgrounds, adventure trails, basketball and volleyball courts, a skate park, a children’s library, activity workshops, and skill-building courses.

The project, which started in 2019 with the Yedikule Hisarı stage, was launched using an open construction site methodology while restoration works were still ongoing. By 2020, the stage extending from Hisar to Mevlanakapı was completed and put into practice. Another key stage of the project was the Topkapı Kale-içi Square, which, in 2021, was designated as the site for an urban design competition. The winner project was

prepared for implementation, and the process began in 2024. In 2023, on the other hand, project work began for the northern phase of the visionary project extending from the Sea of Marmara to the Golden Horn.

The project was carried out through a participatory planning process involving relevant public institutions, expert teams, and local stakeholders. In line with conservation principles, a sustainable urban design approach was adopted. In the applications where native plant species were preferred, environmental impacts were reduced through green infrastructure solutions, and data on user satisfaction highlighted the functionality and public value of the space.



THE COASTS BELONG TO THE PEOPLE

Project Owner

KARASU MUNICIPALITY

Proje Category

URBAN PLANNING AND INFRASTRUCTURE



Karasu is a coastal district with roughly 11 kilometers of shoreline on the Black Sea. According to 2023 data from the Turkish Statistical Institute (TurkStat), 73,738 people reside within the municipal boundaries of Karasu. In summer, that number reaches up to as many as 1.5 million and continues to grow each year. Situated where the Sakarya River meets the Black Sea, Karasu is one of the most prominent districts of Sakarya. Its tourism potential is on the rise, urban development is advancing steadily, and with its 11 km of coastline—the second-longest in Türkiye—it boasts a significant natural asset.

However, as a result of the parcel divisions carried out in the 1960s, the coastal areas that should be under state control within the scope of the Coastal Law No. 3621 and Article 43 of the Constitution have become private property. This led to unauthorized construction along the shore, and later, mass legalization of these buildings through amnesty regulations. Even though administrative efforts have been launched to annul those building registrations, private ownership of coastal parcels largely persists—blocking public access and the creation of recreational areas.





Meanwhile, accelerating coastal erosion driven by global climate change has begun to undermine infrastructure systems. To address these challenges, the “The Coasts Belong to the People” Project was launched in 2022. As part of this effort, zoning plans have been drawn up for approximately 117.5 hectares of Treasury-owned land in the Camitepe neighborhood and submitted to the General Directorate for Protection of Natural Assets. After those plans were approved in 2024, the relevant parcels were designated as “Reserve Construction Areas” in collaboration with the Marmara Urban Transformation General Directorate.

At the same time, studies are underway to declare about 900 privately owned coastal parcels as “risk zones.” In the next phase of the project, the privately owned coastal parcels will be declared risk zones and

expropriated; the compensation payments will be covered by channeling the revenues generated from the area designated as a reserve construction area into an urban renewal account. This financing model ensures implementation without imposing additional burdens on central or local government budgets.

Additionally, the project also includes plans to extend the previously built 2.5 km coastal road further along the shoreline. By restoring state ownership of areas that should remain under public jurisdiction, opening the coastline for public use, creating a variety of recreational spaces along the shore, and upgrading urban infrastructure systems to address climate-change impacts, these initiatives will serve as a model for coastal cities across the country.



Transportation and Mobility

Projects aiming to create a sustainable, accessible, safe, comfortable, integrated and efficient transportation and mobility system are evaluated in this category. Transportation and mobility have a wide range of effects from climate change to air quality, from social inclusion to the health and quality of life of individuals, and this reveals the importance of studies in this field. Projects within this category include active transport modes—such as walking, cycling, and micro-mobility—as well as public transportation, maritime transit, and rail systems. These projects aim to improve access to urban spaces and services for everyone, including individuals with limited mobility such as children, the elderly, persons with disabilities, and pedestrians with strollers. These projects may also include innovative and creative approaches, such as digital solutions and participatory practices, in addition to structural transportation investments.



SIDEWALKS BELONG TO US

Project Owner
ŞİŞLİ MUNICIPALITY

Proje Category
TRANSPORTATION AND MOBILITY



Şişli Municipality's "Sidewalks Belong to Us" project was developed in response to frequent public complaints about the occupation of sidewalks by vehicles, which highlighted the need for such an initiative. Considering the difficulties experienced by the citizens, it is aimed to create a safer and free space on the sidewalks. In addition, parking space solutions have been developed in line with the feedback from local shopkeepers and workplaces. Thus, a useful solution was offered for both pedestrians and commercial enterprises.

Funded through municipal resources, the project seeks to eliminate the illegal occupation of sidewalks by

motor vehicles, allowing residents to move comfortably and safely through urban spaces. Emphasizing a people-centered approach, the initiative contributes significantly to urban quality of life, pedestrian comfort, and traffic management.

The project uses technologies such as body cameras and drones to detect violations quickly and enforce penalties effectively. These innovations help develop efficient, scalable solutions.

In high-violation zones, dedicated parking areas for vehicles and motorcycles have been created to free

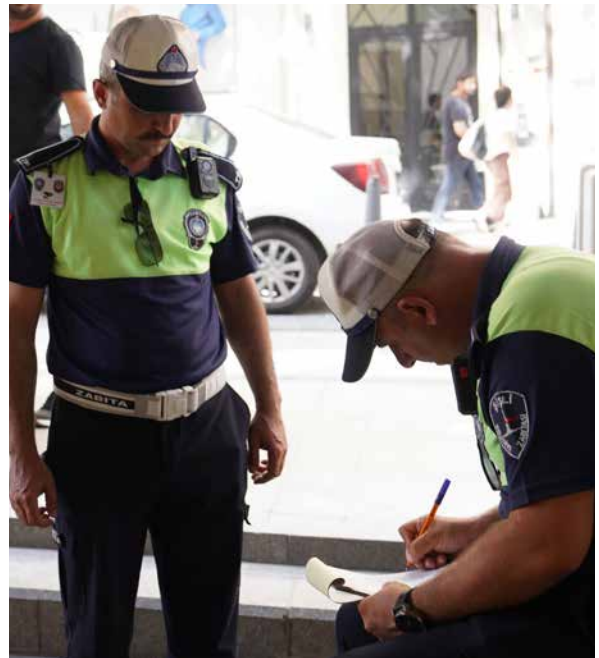




up pedestrian paths. Additionally, 60 reports were prepared to address sidewalk-related issues, leading to their resolution and the establishment of a motorcycle parking area based on identified needs.

As one of the districts with heavy traffic and pedestrian circulation, Şişli is taking an important step with

this project. The “Sidewalk Belongs to Us” project distinguishes itself through its practical solutions and offers a model that can be easily implemented across Türkiye. In the long term, it can serve as a reference for addressing similar problems and be adopted in other regions as well.





Local Development

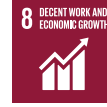
Local development, one of the core elements of regional development, includes efforts aimed at strengthening local economic, social, cultural, environmental, physical, and institutional capacities within a geographically defined area to improve quality of life. This includes projects that seek to utilize local resources and opportunities by considering the competencies and needs of local communities, create employment opportunities tailored to these needs, develop services and products, and support knowledge production as well as the enhancement of skills and qualifications.



FINTECH FACTORY

Project Owner
ATAŞEHİR MUNICIPALITY

Proje Category
LOCAL DEVELOPMENT



Fintech Factory is an acceleration program designed to support the growth of startups operating in the field of financial technologies and to contribute to the development of the entrepreneurial ecosystem. Led by Ataşehir Municipality, the program offers startups that have completed the prototype or MVP stage specially tailored support mechanisms based on their needs.

The program is structured with a multifaceted approach through the contributions of entrepreneurship experts, industry representatives, and investors. It provides participating startups with comprehensive opportunities such as collaboration with local and global stakeholders, mentorship, training, access to investors,

business networking, free office space, and digital services. These supports facilitate startups' scaling processes and prepare them for investment rounds.

Within the scope of Fintech Factory, the Idea Marathon is organized as a 24-hour intensive training and ideation event aimed at university students and recent graduates. Participants develop solution proposals in randomly formed teams in line with the briefs provided by partner fintech companies. At the end of the process, they present their ideas directly to industry representatives, gaining valuable professional feedback. This event not only reveals the potential of young talents in the fintech sector but also supports

the program's goal of spreading entrepreneurial culture more widely.

Fintech Factory stands out as one of the first fintech acceleration programs supported by a local government. The program aims to enhance Ataşehir's economic diversity and promote regional development while contributing to the strengthening of the local fintech ecosystem. Infrastructure supports, mentoring services, investment opportunities and sectoral network connections offered for the development of initiatives are among the key components that embody these goals.

The program also fosters a sustainable model by promoting a "giveback" culture within the ecosystem. It encourages startups that have secured investment and achieved scaling to share their experiences with early-stage entrepreneurs. As these entrepreneurs take on mentorship roles in the future, the ecosystem evolves into a self-sustaining and continuously growing structure.

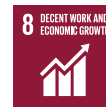
The sustainability of Fintech Factory is ensured by the effective use of existing resources, allowing new program cycles to be launched without the need for external funding. Through this model, the program can reach more entrepreneurs and continue to create long-term value for the ecosystem.



A NEW BEGINNING FOR WOMEN: EMPLOYMENT AND SUPPORT PROGRAM

Project Owner
AVCILAR MUNICIPALITY

Proje Category
LOCAL DEVELOPMENT



A New Beginning for Women: Employment and Support Program is a comprehensive initiative developed to promote women's economic independence, enhance their participation in the workforce, and encourage more active roles in social life. By offering vocational training, childcare support, and psychological counseling services, the program supports both the professional and personal development of women.

The program consists of three main components: **Nail Extension Training** and Employment, Mobile Nursery Service, and the Women's Solidarity Center.

The first component, Nail Extension Training and Employment, provides women with professional training aimed at securing employment in the beauty sector. As a result of this training, many participants have joined the workforce, established their own businesses, or started providing services from home, securing sustainable income streams. Data shows that participants have gained significant economic independence through this initiative.

The Mobile Nursery Service was developed to ensure that women could continue their trainings without interruption. In neighborhoods lacking adequate child-





care services, mobile nurseries offered children a safe and educational environment, enabling women to fully focus on their training. Thus, women who previously could not access training due to childcare responsibilities were also included in the process. Meanwhile, children engaged in educational and recreational activities under the supervision of professional caregivers.

The final component, the **Women's Solidarity Center**, provides psychological and social support services to help women cope with life challenges. Women who benefit from counseling and guidance services have begun to participate more actively in social life as empowered individuals.

Overall, the program contributes to the economic, social, and psychological empowerment of women, generating social value that goes beyond individual development.

The process, which began with nail extension training, will be expanded over time with new vocational training programs aligned with market dynamics and sectoral needs. This flexible and adaptable structure ensures the program's continued evolution and the provision of long-term employment opportunities for women. Institutional support, collaborations with the business world, and a foundation of social solidarity together ensure the sustainability of the program.



SUPPORTING LOCAL PRODUCERS

Project Owner
ÇANAKKALE MUNICIPALITY

Proje Category
LOCAL DEVELOPMENT



The Supporting Local Producers Project was developed as part of an integrated urban-rural development approach and brought together producer cooperatives, farmers, and university around a shared local development strategy. While aiming to strengthen the institutional capacity of producer associations, the project also creates opportunities for local producers to benefit from the academic know-how of the university.

As part of the project, the content of olive oil produced by small-scale producers was analyzed in collaboration with Çanakkale Onsekiz Mart University, enabling them

to better understand the qualities of their products through scientific analysis. The 19 producers whose products were documented through this process were able to market their goods at fair value.

In a separate initiative carried out in partnership with the Çanakkale Beekeepers Association, 700 kilograms of wax foundation were distributed to 81 beekeepers. This support promoted proper material usage, increased honey yield per hive, and helped Çanakkale rise to second place in Türkiye in terms of hive productivity.



Following the devastating forest fire in 2023, emergency needs of affected villages were addressed, and to prevent rural depopulation and ensure continued production, heritage wheat and feed barley were sown on municipal lands. The crops harvested in spring 2024 were distributed among 68 farmers willing to resume production. The 2025 harvest is currently being monitored by the municipality's agricultural engineers. Throughout this process, Çanakkale Municipality has played an active role in facilitating market access for these products.

The project also focuses on connecting rural producers with urban consumers. Local products such as olive oil and honey were directly delivered to residents under hygienic conditions via booths set up during the municipality-led Seed Exchange Festival. The festival featured panels and talks that brought together citizens from both rural and urban areas, providing a platform for collaborative problem-solving.

What sets the project apart is that it paves the way for producer associations, municipalities, and universities to jointly shape local development strategies and strengthen the culture of inter-agency cooperation. This collaborative model marked the first time such an integrated development framework was implemented in the city.

Moreover, the support provided under the project has driven significant innovation in local farming practices. Olive oil producers have started developing marketing strategies based on product analysis data. Farmers participating in the Seed Bank initiative have begun using free soil analysis services, leading to more informed fertilization practices. Additionally, the cultivation of heritage seeds is being scientifically monitored by the municipality's agricultural engineers—an important step forward in improving the overall quality of agricultural production in the region.



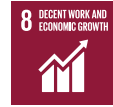
WOMEN'S ARTISAN MARKET

Project Owner

ÇINARCIK MUNICIPALITY

Proje Category

LOCAL DEVELOPMENT



The Women's Artisan Market, initiated by the Municipality of Çınarcık in Yalova, aims to support women in generating income by enabling them to sell their handmade products directly to consumers. The market, established on a 125-square-meter area, includes five 25-square-meter tents built to withstand wind and water.

Currently, 168 women artisans are actively involved. Participants include master instructors and trainees from the Çınarcık Public Education Center, women entrepreneurs from the Çınarcık Hanımelleri Cooperative, and local homemakers not affiliated with any cooperative or institution.

The market features a wide variety of handcrafted items such as jewelry, bags, keychains, home décor, pyrography crafts, knitted dolls, embroidered linens and many more. It also showcases Çınarcık İşi — a traditional embroidery unique to the region and officially recognized with a geographical indication by the Turkish Patent and Trademark Office. This craft, made by pulling threads from raw silk, cotton, or linen fabrics and stitching with natural threads, helps preserve cultural heritage while providing women with a meaningful and distinctive source of income.

All costs related to the establishment, infrastructure, and operation of the market are fully covered by the





Çınarcık Municipality.

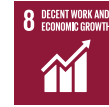
Operating regularly during the summer, the Women's Artisan Market has attracted significant attention from the local community. It serves as a vital social enterprise that encourages women's participation in production, promotes economic empowerment, and supports gender equality through a sustainable approach.



YOUNG DIGITAL ENTREPRENEURSHIP ACADEMY

Project Owner
GÜRSU MUNICIPALITY

Proje Category
LOCAL DEVELOPMENT



The Young Digital Entrepreneurship Academy aims to create sustainable employment and entrepreneurial opportunities for women and young people by leveraging the possibilities offered by digitalization. As the digital economy rapidly expands globally, the demand for skilled professionals —especially in areas like e-commerce, digital marketing, and mobile gaming— is steadily increasing. This growth opens up new opportunities for disadvantaged groups to participate in the workforce.

The project offers tailored training and support programs for young people aged 13–25 and women

over 40. Participants' needs were analyzed in advance, and field studies identified key barriers to workforce participation. Through the tailored training content and hands-on programs developed within this framework, participants have enhanced their vocational skills and gained competencies in digital entrepreneurship.

For many young participants who once saw gaming purely as entertainment, the project sparked a shift: they began developing their own mobile games and thinking about future careers as early as age 13. Through game development camps and competitions, they gained skills such as problem-solving, technologi-





cal adaptation, professional ethics, and teamwork, and started to view the gaming industry as a real career path. The project has helped steer youth away from gaming addiction and toward future-oriented career planning.

For women, the project offered e-commerce and digital marketing trainings, along with mentoring and technical support to help them turn home-based production into viable businesses. By encouraging women over 40 to become entrepreneurs, the project has increased their participation in economic life. With their handmade products now generating sustainable income, these women are contributing to local de-

velopment not only through domestic sales but also through exports.

Through this initiative, Gürsu Municipality is not only supporting the economic independence of women and youth but also enhancing the quality of urban life and promoting social development. This entrepreneurship-driven model contributes to local development while also creating a strong impact by promoting participation in the digital economy, advancing gender equality, and increasing youth inclusion in economic life. This approach serves as a replicable example for other regions and inspires new projects.



KADIKÖY DÜKKÂN

Project Owner
KADIKÖY MUNICIPALITY

Proje Category
LOCAL DEVELOPMENT



Kadıköy Dükkan (Kadıköy Shop), an initiative of Kadıköy Municipality, is the first brand in Türkiye to be launched under the umbrella of a local government. This project, as the first example in Türkiye of locally driven design and production models commonly seen in global cities like New York, Berlin, and Amsterdam, is a pioneering initiative that supports the local economy and creative production.

Developed by experts from the Kadıköy Design Atelier (TAK), Kadıköy Dükkan is the product of an in-depth process that tackled urban challenges through design, research, and participatory methods. Drawing on Kadıköy's history, architecture, and cultural heritage,

the project features high-value products crafted by local designers and artisans—making the city's identity more visible while promoting local production.

The promotion and sale of products are supported through both temporary and permanent retail spaces, contributing to the emergence of new tourism routes in Kadıköy. The first store opened in the TAK service building, followed by new locations at the Caddebostan Cultural Center (CKM) Bookstore and the Zero Waste Store in Feneryolu due to growing interest. Additionally, the project reaches broader audiences through pop-up stands at various events and festivals.



The products, made from natural and organic materials, offer safe and health-conscious choices for consumers while supporting environmental sustainability. This focus on reducing carbon footprint is a core element of the project's eco-friendly vision.

The project also fosters national and international collaborations between designers and volunteers, bringing together diverse perspectives to encourage innovation. Active participation by local residents strengthens social bonds and contributes to overall community wellbeing.

Kadıköy Dükkan has become a popular destination offering unique souvenirs for both local and international tourists, thereby contributing to the growth of local tourism and the regional economy. By adopting a circular economy model centered on sustainability, it presents a self-renewing and innovative development process that continuously fuels its own growth.



KAPAKLI PROJECT: HANDS THAT GROW AND PROCESS MUSHROOMS

Project Owner
KAPAKLI MUNICIPALITY

Proje Category
LOCAL DEVELOPMENT



Kapaklı Project: Hands That Grow and Process Mushrooms is a sustainable development model aimed at contributing to the employment of disadvantaged groups, particularly women and youth, through oyster mushroom production. This innovative project supports agricultural production while promoting long-term economic independence and social inclusion.

In Kapaklı, 10 unused military ammunition depots, allocated to the municipality, have been modernized and transformed into a mushroom production facility with an annual production capacity of 240 tons. While the project prioritizes environmental sustainability, it

also contributes to local development by repurposing unused areas for production.

During the setup of the facility, necessary infrastructure and technical equipment for mushroom production were provided, and administrative units were established for managing the production areas. Two depots were modernized for pasteurization, packaging, cold storage, and water treatment units; while eight depots were converted into mushroom production units. After completing the technical preparations, training programs were organized in collaboration with Kapaklı Public Education Center, equipping partici-



pants with vocational qualifications.

Individuals who successfully completed the training process were employed and integrated into the production phase. Participants in the project are supported through the fund that offers them the opportunity to establish their own mushroom production facilities at the end of three years. In this sense, the project goes beyond being just a production facility and has become a social model that promotes entrepreneurship.

Various promotional activities were carried out to raise public awareness; the project was featured in regional and national media, and the project outcomes were shared during the closing meeting. Regular monitoring and internal audits were conducted throughout the process to ensure the implementation progressed transparently and sustainably.

This project combines social responsibility with economic production, improving the quality of life for the local community while providing an inspiring example of social solidarity and environmental sensitivity.



MAKINA HANGAR: KARTAL'S SCIENCE, ENGINEERING & TECHNOLOGY HUB

Project Owner
KARTAL MUNICIPALITY

Proje Category
LOCAL DEVELOPMENT



Makina Hangar (Machine Hangar), transformed from an old factory structure that bears witness to the city's industrial history, is a holistic project focused on science, engineering, and technology. Situated on a 5-acre site, this center offers an inclusive learning and development environment for both children and young professionals, with 3,000 square meters of indoor space and 2,000 square meters of outdoor space.

The center operates along three main axes: Science, Digital Transformation, and Entrepreneurship.

The Science Corridor offers STEAM (Science, Technology, Engineering, Art, and Mathematics) education for children aged 6-14. In the five-step program, participants are introduced to topics such as engineering,

light and color, and energy systems, and develop problem-solving skills through robotic programming in later stages. The program culminates with a space theme, contributing to the development of scientific thinking skills through project creation and teamwork.

The Digital Transformation Center provides guidance to the industry on digital transformation, offering training and practical programs aimed at the regional industrial ecosystem. Training sessions are organized in areas such as IoT, digital twin technologies, artificial intelligence, and robotic automation. Seminars and national and international events promote innovative technologies. Solutions are developed for industrial problems while supporting the professional development of engineers. Additionally, career awareness



activities are carried out for children and young people through vocational introduction programs.

The Entrepreneurship Center supports the development of university students' technology and engineering-based ideas, fostering the entrepreneurial ecosystem. Student teams are provided with space, mentorship, material support, and communication networks, and the integration of projects with the industry is facilitated through incubation services. By simplifying technology transfer processes and encour-

aging cross-sector collaborations, the development of innovative ventures is supported.

Makina Hangar provides a multi-dimensional development environment in science and technology, contributing to transformation processes at both individual and institutional levels. With its wide range of influence, from education to production, entrepreneurship to industry collaborations, the center prepares the ground for the realization of innovative ideas, positioning itself as a model science and technology hub in Türkiye.



KADINELI OSMANELI REGIONAL PRODUCTS PRODUCTION CENTER

Project Owner
OSMANELİ MUNICIPALITY

Proje Category
LOCAL DEVELOPMENT



The KadınEli OsmanEli Regional Products Production Center Project is an innovative initiative that supports women’s employment, drives the branding of local specialties, and contributes to regional development. Focusing on Bilecik Province’s geographically-indicated and patented products, it offers a multifaceted economic, social, and cultural model.

Housed in a 1,000 m² indoor facility, the center employs 20 people—16 of whom are women. The facility produces regional specialties such as geographically-indicated Osmaneli quince Turkish delight and pomegranate delight, as well as all-natural tomato

paste made using the traditional simmering method. All products are made using entirely natural ingredients, free from additives, follow time-honored recipes and are distributed to a broad consumer market.

These locally crafted goods are regularly delivered to retail outlets across Türkiye. This distribution network not only underpins the cooperative’s economic sustainability but also ensures that local producers receive fair compensation for their efforts. By valorizing off-grade quince and pomegranate fruits, waste is reduced while creating additional income opportunities for rural producers, thereby supporting rural development.





Beyond its economic output, the project generates significant social impact. Women's active participation in production processes enables them to become more visible in economic life and stands out as a powerful step towards gender equality. This social-entrepreneurship model operated through women's cooperatives, exemplifies successful collaboration between local government and community stakeholders.

By turning local specialties into gift-worthy brands, the project has amplified the district's cultural values, bolstering Osmaneli's reputation and strengthening its civic identity. The products' natural composition and real-fruit content promote healthier eating habits and positively influence consumer choices.

This project places women's labor at the heart of adding value to local products, offering an innovative model both economically and socially. Its support for women entrepreneurs, sustainable agricultural practices, and focus on all-natural production set it apart. By bringing these specialties to the national market, activating social-entrepreneurship models, and integrating rural economies, the project lays the foundation for long-term success.

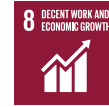
Ultimately, it represents a comprehensive vision for Osmaneli's development; through a value chain that spans from producer to consumer and from local to national markets, it has become a benchmark model for community-driven growth.



SULTANBEYLİ DIGITAL TRANSFORMATION AND COMPETENCY DEVELOPMENT CENTER

Project Owner
SULTANBEYLİ MUNICIPALITY

Proje Category
LOCAL DEVELOPMENT



The Sultanbeyli Digital Transformation and Competency Development Center Project is an innovative initiative designed to integrate local merchants and young entrepreneurs in Sultanbeyli into the digital world. In response to the post-pandemic boom in e-commerce, the project seeks to accelerate small and micro businesses' transition to online sales and strengthen their competitiveness through tailored digitalization processes.

The core objectives are to assess each business's current digital maturity, raise awareness of digital transformation, and ensure easy access to training and consultancy services for the target groups. Launched swiftly with expert guidance, the center is structured to make an immediate impact on the digitalization journey of local enterprises.

Activities at the center are shaped by a report measuring the digitalization level of businesses, compiled through visits and surveys of local merchants. Based on those insights, the center offers services including e-commerce consultancy, product content editing, social media management, digital visibility strategies, and a professional product photography studio. It also delivers hands-on workshops and courses such as "Fundamentals of E-Commerce," "Digital Marketing & E-Commerce," "Applied E-Commerce," "Social Media Management," and "Product Photography." These trainings are reinforced with awareness seminars, experience-sharing sessions, and interactive workshops.

Beneficiaries can freely use the center's meeting rooms, computer labs, and cafeteria, and they receive a digital business-card service. This infrastructure



allows shopkeepers and entrepreneurs to immediately implement what they learn in their own operations.

The project has reached its audience through joint announcements with local trade representatives and forged partnerships with private-sector stakeholders. Sponsorships from these collaborators have further amplified the initiative's reach and impact.

The training and consultancy services have driven significant digital progress among Sultanbeyli's merchants and entrepreneurs. This process has also increased their digital literacy levels, supporting their rapid adaptation to emerging commerce trends. By contributing to the district's entrepreneurial ecosystem, it has fostered employment growth and encouraged network development through collaboration among local merchants. The resilience of local businesses

against sudden challenges, such as the pandemic, has also been markedly enhanced.

By adopting an equitable, collective, and participatory approach, the project has established a sustainable, productive economic model that underpins the district's development. The creation of a dedicated digital platform has streamlined citizens' access to services and strengthened the municipality's institutional capacity. Moreover, organizational structures have been fortified, inter-agency coordination improved, and a solid foundation laid for future initiatives.

In conclusion, the project has been successfully implemented, contributing to the evolution of Sultanbeyli Municipality's innovative and inclusive vision of social service delivery.



SOCIAL INNOVATION AND ENTREPRENEURSHIP CENTER

Project Owner
YILDIRIM MUNICIPALITY

Proje Category
LOCAL DEVELOPMENT



The Yildirim Municipality Social Innovation and Entrepreneurship Center, is designed as a comprehensive model to boost productivity in employment and encourage citizens' participation in qualified labor. The project takes a holistic approach to support individuals seeking work at every step of the hiring process and delivers sector-tailored training to supply the local job market with skilled personnel.

At the Center, each participant receives a personalized support plan to gain vocational competencies and be steered toward suitable job opportunities. Special programs for disadvantaged groups—women, youth, and people with disabilities—reinforce social inclu-

sivity. Within a supported-employment framework, participants also benefit from onboarding guidance. Supported by national and international funding, the Center continuously adapts to emerging technologies to maintain its financial and operational sustainability.

In collaboration with employers, the Center organizes group recruitment fairs and offers vocational-technical courses that align its outcomes with real market demands. Beyond textile, machinery, food, and service-sector trainings, there is a strong focus on fostering women's entrepreneurship: women join the entrepreneurial ecosystem through cooperatives and receive dedicated training to launch their own ventures.





Under the project, the foundation of the Employment Complex was laid in 2019. The five technical workshops established—covering CNC machining, computer-aided design, industrial machinery operation, and more—provided the technical backbone for vocational training, and in subsequent years this infrastructure was rolled out to 25 neighborhood sites through Women’s Education and Entrepreneurship Centers.

To ensure agility in meeting sector needs, the curriculum combines design-oriented content with up-to-date industry expectations and integrates on-the-job practice into the learning process. Under the umbrella of the Social Innovation and Entrepreneurship Center, this framework remains viable today and sustainable against future challenges.

Over five years, the project has delivered vocational and technical training to approximately 11,821 people, placed more than 6,500 in employment, and established 13 women’s cooperatives. Entrepreneurship has been supported through women’s cooperatives, and efforts under the slogan “Employment Is Our Business” have increased the region’s employment capacity. Moreover, design-driven initiatives have supported ventures in creating trademarked and geographically-indicated products, directly contributing to regional development.

Thanks to its flexible structure, participatory model, and strong institutional partnerships, the Center not only fosters individual employment but also stands out as a best-practice model for sustainable, community-led development.





Governance and Participation

Participation is a fundamental element of the right to the city—a concept that embodies the relationship between local governments and democracy, and the inclusion of citizens in urban decision-making processes. Establishing democracy at the local level requires the creation of mechanisms that enable active participation and ensure transparency in decision-making. This category includes social participation mechanisms and good governance practices that make fair, inclusive, and democratic urban governance possible. It also includes keeping participatory processes—which are multi-layered and dynamic—open and functional to enable collaboration between citizens and local governments in addressing local issues; building platforms and spaces for dialogue that bring together various urban actors and stakeholders; developing systems to gather input from diverse local stakeholders; creating tools that allow transparent monitoring of municipal decision-making processes; and developing technological solutions to enhance stakeholder participation.



A SUSTAINABLE PARTICIPATION JOURNEY THROUGH STRATEGIC PLANNING: “PRODUCE TOGETHER, GOVERN TOGETHER!”

Proje Sahibi
NİLÜFER MUNICIPALITY

Proje Category
GOVERNANCE AND PARTICIPATION



“Produce Together, Govern Together!” Project, a participatory approach launched by Nilüfer Municipality during the process of developing its 2025–2029 Strategic Plan, aims to establish an innovative, sustainable mechanism in which resources are managed effectively, transparently and accountably while local public needs are addressed.

By integrating participation into its strategic planning process, Nilüfer Municipality became the first local government in Türkiye to pioneer this approach in 2002.

Since then, it has viewed the strategic planning process as the primary means of facilitating citizen involvement in governance and has adopted this approach as a guiding principle.

The process took on a new dimension in 2009 with the creation of Neighborhood Committees under the Nilüfer City Council. This framework enabled direct public participation in neighborhood-level decision-making, with the goal of co-creating public spaces, and established a democratic model of local governance.



As part of the project, input was gathered from all segments of society through interactive methods. Alongside workshops and working sessions with internal municipal stakeholders, the municipality held “Neighborhood Circles” and “Participation Circles” with residents; “Future Workshops” and a “Future Circle Board” with women, youth, children, and council members; as well as suggestion boxes and digital participation surveys. At each meeting, neighborhood-specific challenges, needs, and proposed solutions were discussed collaboratively in response to the question, “What kind of Nilüfer do we want?”

Thousands of comments gathered over the course of the process were analyzed using artificial intelligence and other technological tools, and the results were systematically classified for consideration at various

stages of the strategic plan. All of these activities were carried out within the framework of the United Nations Sustainable Development Goals (SDGs), resulting in six Strategic Goals and thirty-six Strategic Targets.

When selecting performance indicators for each target, the Local SDG Index and Indicator Set developed in cooperation with Marmara Municipalities Union was used to identify 144 indicators linked to the SDGs.

This participatory journey, which began with strategic planning, strengthens democratic culture through the governance model and collective decision-making platforms that were established and continues with the goal of making Nilüfer a more participatory, sustainable, and livable city.



ENVIRONMENTAL INSPECTORS OF YILDIRIM

Proje Sahibi
YILDIRIM MUNICIPALITY

Proje Category
GOVERNANCE AND PARTICIPATION



One of the greatest challenges of our time and for our future is climate change and environmental pollution. Rapid population growth, industrialization and unplanned urban development are causing ever greater volumes of waste, which in turn create serious environmental, social and economic problems. Addressing these issues requires not only strengthening technical, administrative and financial capacities but also raising public awareness. In this context, education and outreach efforts play a key role.

Implemented in line with the Zero Waste principle, this project aimed to instill environmental awareness in children aged 10-14 in the Yıldırım district, raise their understanding of climate change, and support their participation in local governance. To this end, approximately 2,500 students in 25 middle schools across the district received training on Zero Waste management

and climate change, and various awareness-raising activities were carried out.

Following the training sessions, one volunteer child was selected from each of 50 pilot neighborhoods to form a group of 50 Environmental Inspectors. To enhance their visibility and motivation while carrying out their duties, each child was provided with a tablet, an inspector ID card, a badge, a vest, and a cap.

Using the tablets provided to them, the Environmental Inspectors documented various environmental issues they observed in their neighborhoods — such as people littering, harming nature, throwing recyclable materials into regular waste, wasting water and electricity, or mistreating animals — and reported them to the municipality by taking photographs. These reports, submitted through specially developed software, were reviewed daily by relevant municipal departments, and



necessary actions were taken based on the complaints, including issuing warnings or implementing sanctions where appropriate.

Throughout this process, children's environmental awareness grew, and their participation in decision-making mechanisms was actively supported. Four separate Children's Assemblies were held with the involvement of the young environmental inspectors, during which their opinions and suggestions were gathered and taken into account in the development of environmental practices. In addition, quarterly meetings of the Child-Friendly Environmental Assembly were organized with the participation of the mayor and relevant municipal departments, ensuring that children took part in local governance processes. The decisions made during

these meetings were reviewed and implemented by the appropriate municipal units. This initiative contributed to strengthening governance and participation at the local level.

During the project, six technical field trips were organized for children, along with group tree planting events, and the initiative concluded with the Child-Friendly Environment Festival.

This project supported children's engagement in community life and contributed to the development of child-focused policies within local governments. Including children in decision-making processes is essential not only for safeguarding their rights but also for ensuring the sustainability of social development.





Special Jury Awards

As part of the Golden Ant Awards, special prizes granted independently of project categories aim to honor the visionary approaches, pioneering practices, and thematically impactful initiatives of local governments. These awards highlight exemplary projects that stand out in specific themes, set a model, or create sustainable impact, thereby contributing to the dissemination of good practices. Thematic jury awards are determined based on evolving priorities and current needs.



MY BUDGET ISTANBUL

Proje Sahibi
İSTANBUL METROPOLITAN MUNICIPALITY

Proje Category
SPECIAL JURY AWARD



The Participatory Budgeting Istanbul is a local governance model that enables citizens to turn their ideas into projects, which are then voted on by the public and integrated into the municipal budget. Coordinated by the Istanbul City Council, the process includes “Idea Marathons” where participants receive technical support. Applications are submitted through the website butcesenin.istanbul and the Istanbul Senin mobile app. The program provides guidance on how to develop an idea into a viable project within themed frameworks.

Updates are shared via the Istanbul City Council’s website and social media channels, as well as the communication platforms of Istanbul Metropolitan Municipality (IMM). The annually updated calendar is announced to the public through the website.

After the application period ends, proposals are shared with relevant municipal departments and go through a Preliminary and Technical Evaluation process. Projects deemed compatible with relevant legislation and municipal regulations are then submitted to public vote.

Citizens are informed about the voting phase via social media and SMS.

Once voting concludes, the selected projects are published on the Participatory Budgeting website and app, and applicants are officially notified. All stages of the process are designed to be transparent, accountable, and publicly accessible.

Implemented since 2021, the Participatory Budgeting Istanbul strengthens civic involvement in decision-making, aligns the budget with citizens' needs, and promotes democratic service delivery. The program is shaped thematically in response to current societal developments—for example, in 2023, the theme focused on “Disaster and Risk” following the Kahramanmaraş earthquakes, while in 2024, it centered on “Social Policies.”

This approach highlights the model's responsiveness to emerging needs and its commitment to inclusive participation.

The Participatory Budgeting Application stands as an innovative model where citizens can transform their ideas into projects, which are then chosen through a public vote and integrated into the municipality's budget. By utilizing the website and mobile app, the process enhances transparency and accountability, while the monitoring efforts of the Istanbul City Council contribute to the advancement of participatory local governance.

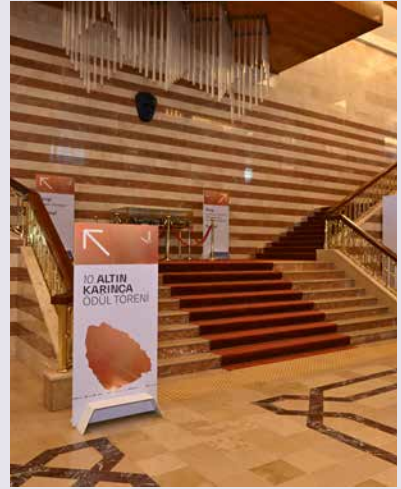






Golden Moments from the Award Ceremony















































•• •• •• ••

•• ••••••

•• ••••••

•••• ••



**GOLDEN
ANT**
AWARD WINNING
PROJECTS 2024